



EXAM PAPERS PRACTICE

GCSE OCR Math J560
Scatter Graphs (inc.
Time Series)

Answers

*"We will help you to
achieve A Star "*



Answer 1

A different car of the same type has an engine size of 2.5 litres.

(b) Estimate the distance travelled on one litre of petrol by this car.

11.1 kilometres

Answer 2

A different student in Year 11 has a height of 148 cm.

(b) Estimate the arm length of this student.

NEED A LINE OF BEST FIT

83 cm

Answer 3

(b) Describe the relationship between the age and the value of the cars.

• NEGATIVE CORRELATION

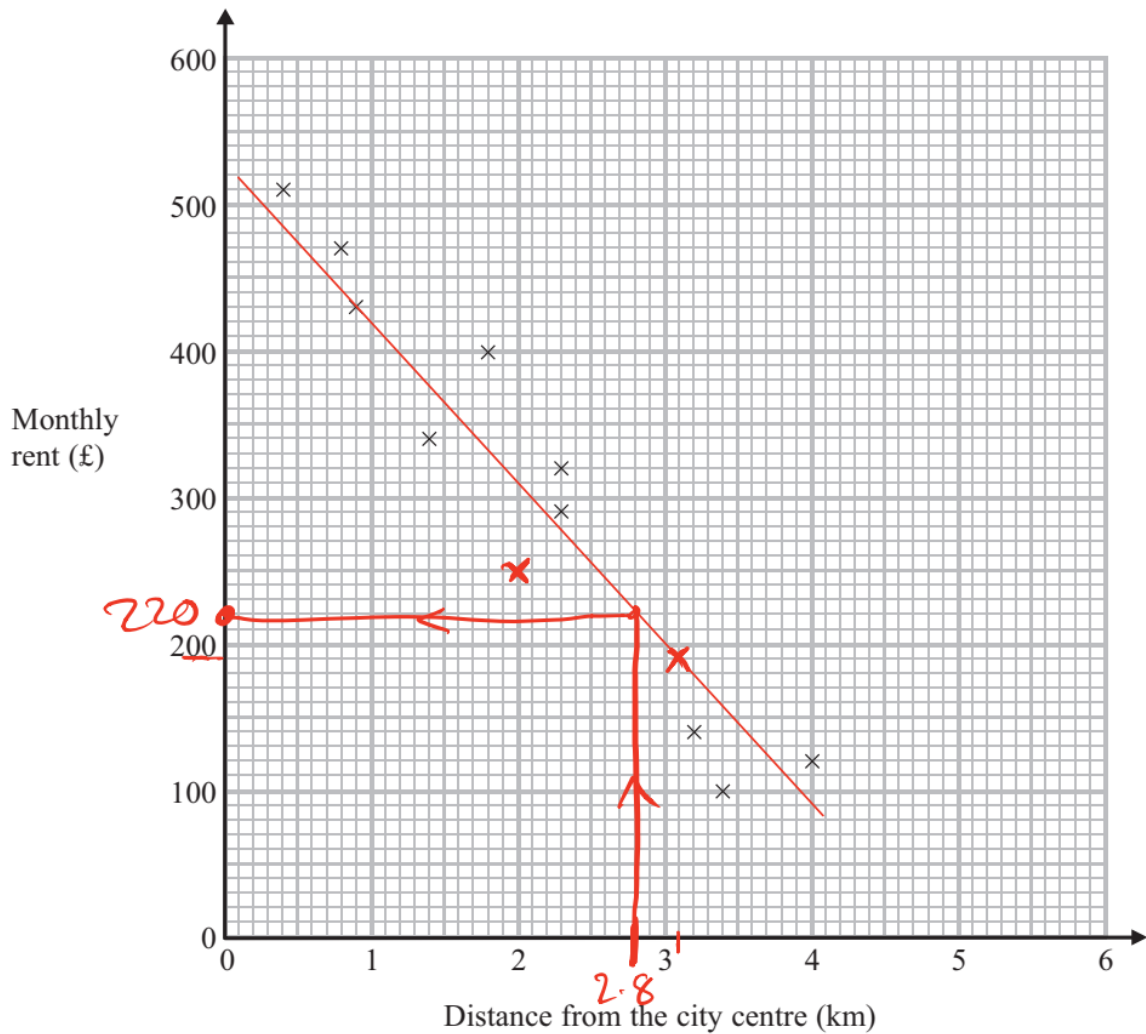
(OR • AS AGE GOES UP, VALUE GOES DOWN)



Answer 4

The scatter graph shows information about 10 apartments in a city.

The graph shows the distance from the city centre and the monthly rent of each apartment.



The table shows the distance from the city centre and the monthly rent for two other apartments.

Distance from the city centre (km)	2	3.1
Monthly rent (£)	250	190

(a) On the scatter graph, plot the information from the table.



Answer 5

An apartment is 2.8 km from the city centre.

(c) Find an estimate for the monthly rent for this apartment.

FROM THE GRAPH

RENT \approx £220

Answer 6

(b) Describe the relationship between the average temperature and the number of units of gas used.

• NEGATIVE CORRELATION

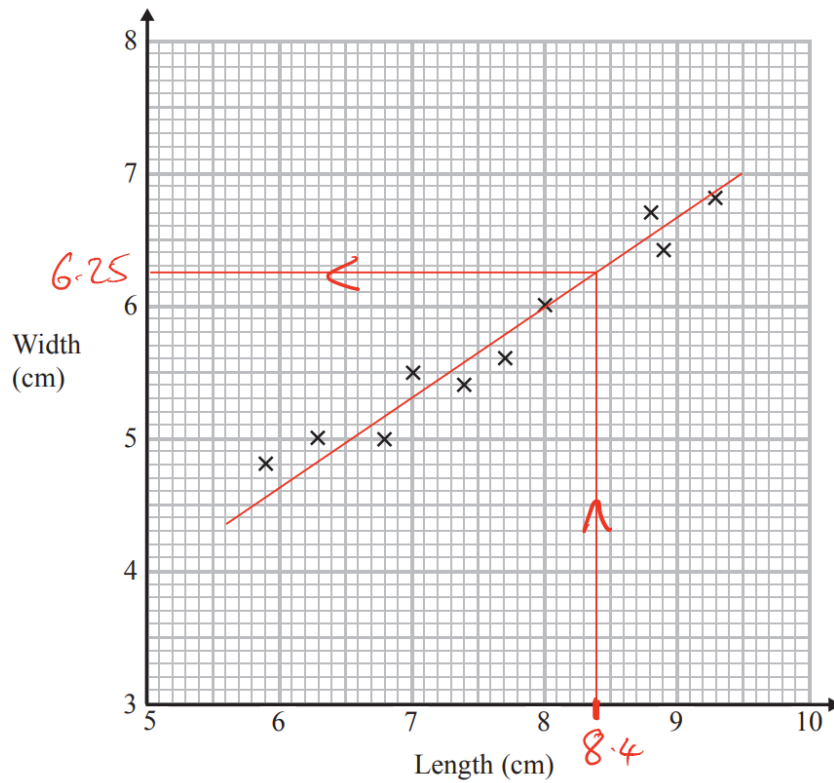
OR

• AS THE AVERAGE TEMPERATURE GOES UP THE UNITS OF GAS USED GOES DOWN.



Answer 7

The scatter graph shows some information about ten pine cones from the same tree.
It shows the length and the width of each pine cone.



(a) Describe the relationship between the length and the width of a pine cone.

• POSITIVE CORRELATION

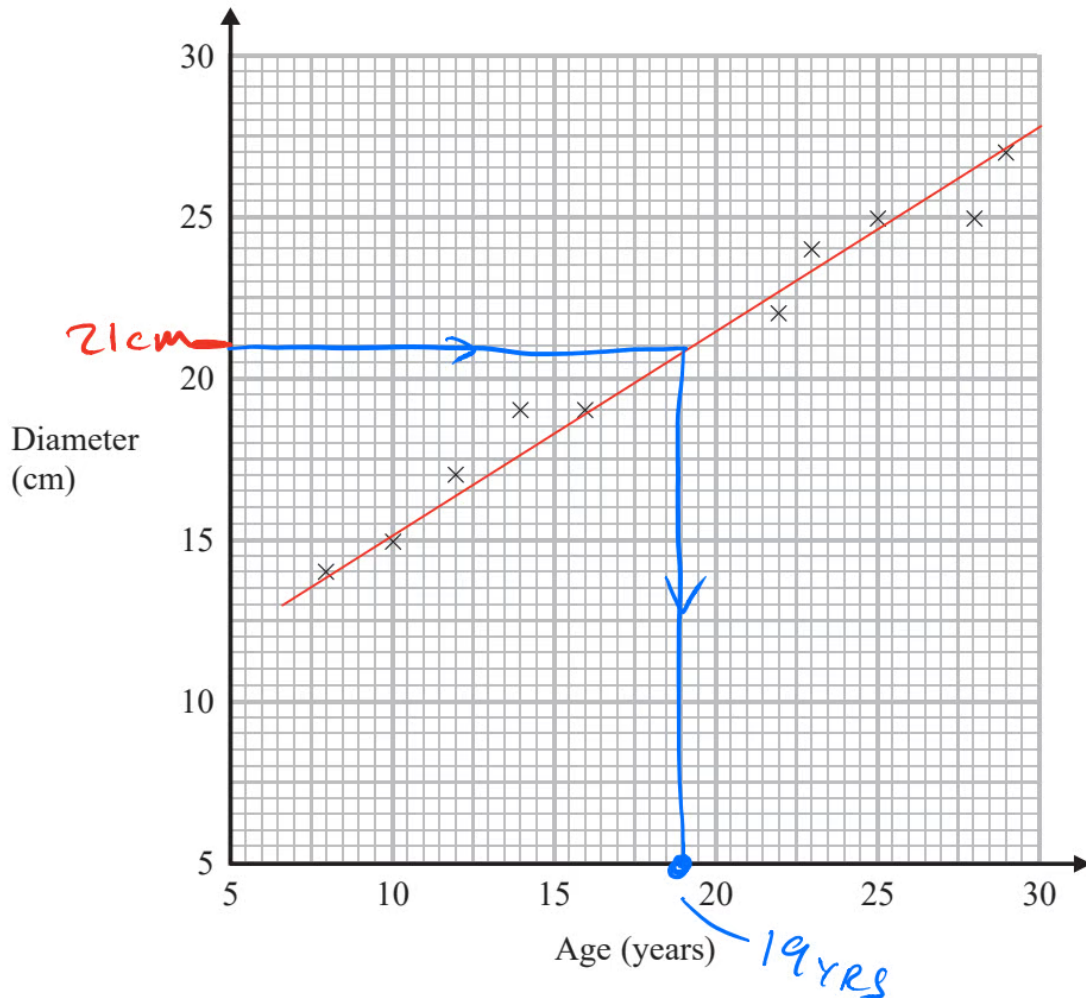
OR

• AS THE LENGTH GOES UP SO THE WIDTH GOES UP.



Answer 8

The scatter graph shows information about ten trees of the same type. It shows the age and the diameter of the trunk of each tree.



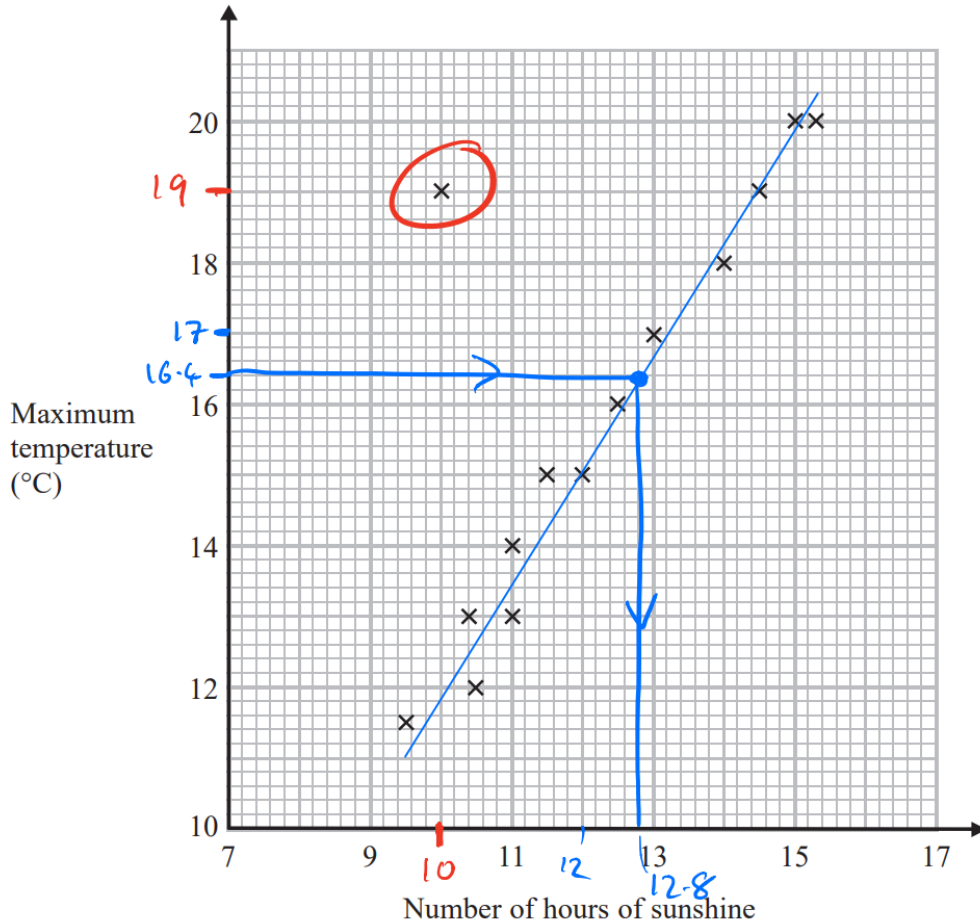
(a) What type of correlation does this scatter graph show?

POSITIVE



Answer 9

The scatter graph shows the maximum temperature and the number of hours of sunshine in fourteen British towns on one day.



One of the points is an outlier.

(a) Write down the coordinates of this point.

(10 , 19)



Answer 10

On the same day, in another British town, the maximum temperature was 16.4°C .

(c) Estimate the number of hours of sunshine in this town on this day.

NEED LINE OF BEST FIT

12.8 HRS



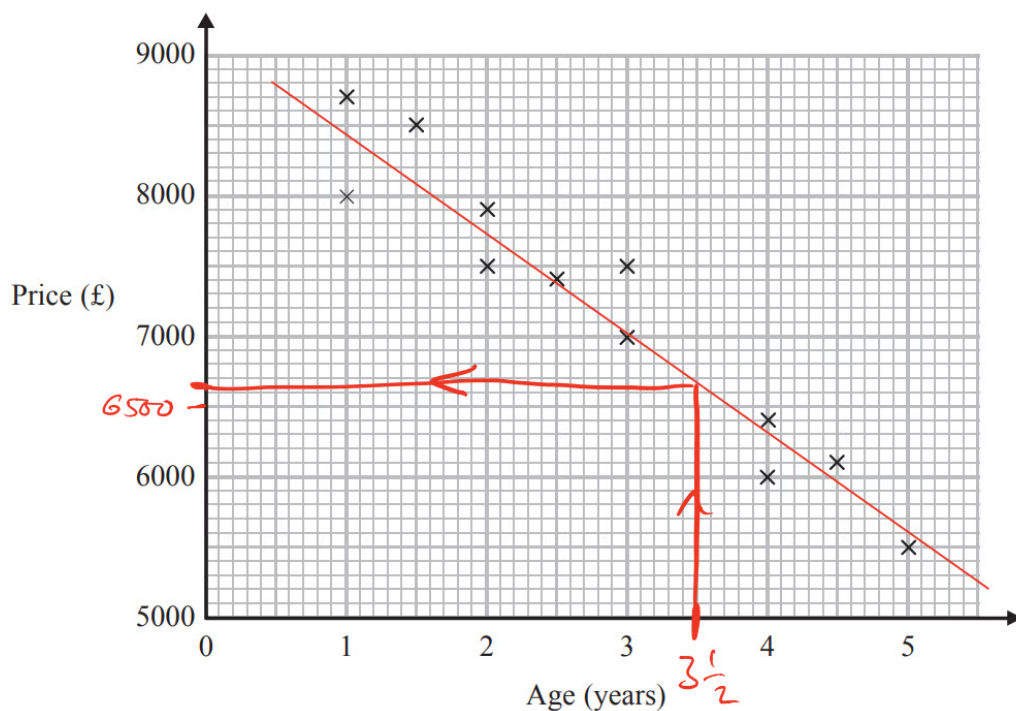
Answer 11

(b) Describe the correlation between the number of documents checked and the total number of errors.

POSITIVE

Answer 12

The scatter graph shows information about the age and the price of each of 12 cars of the same model.



(a) Describe the relationship between the age of a car and its price.

• NEGATIVE CORRELATION

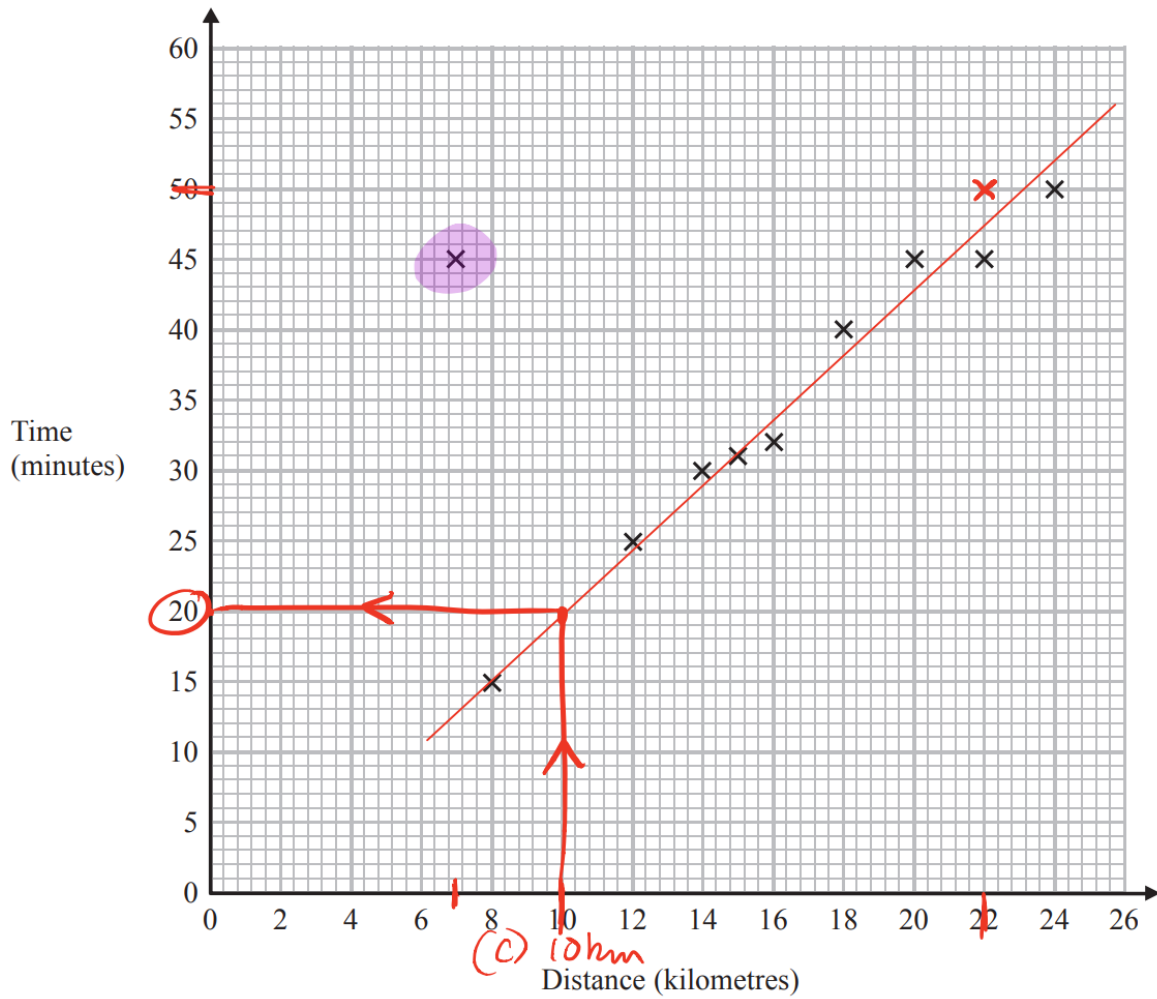
OR

• AS AGE GOES UP PRICE GOES DOWN.

Answer 13

A delivery driver records for each delivery the distance he drives and the time taken.

The scatter graph shows this information.



For another delivery he drives 22 kilometres and takes 50 minutes.

(a) Show this information on the scatter graph.



Answer 14

The driver has to drive a distance of 10 km for his next delivery.

(c) Estimate the time taken for this delivery.

NEED A LINE OF BEST FIT

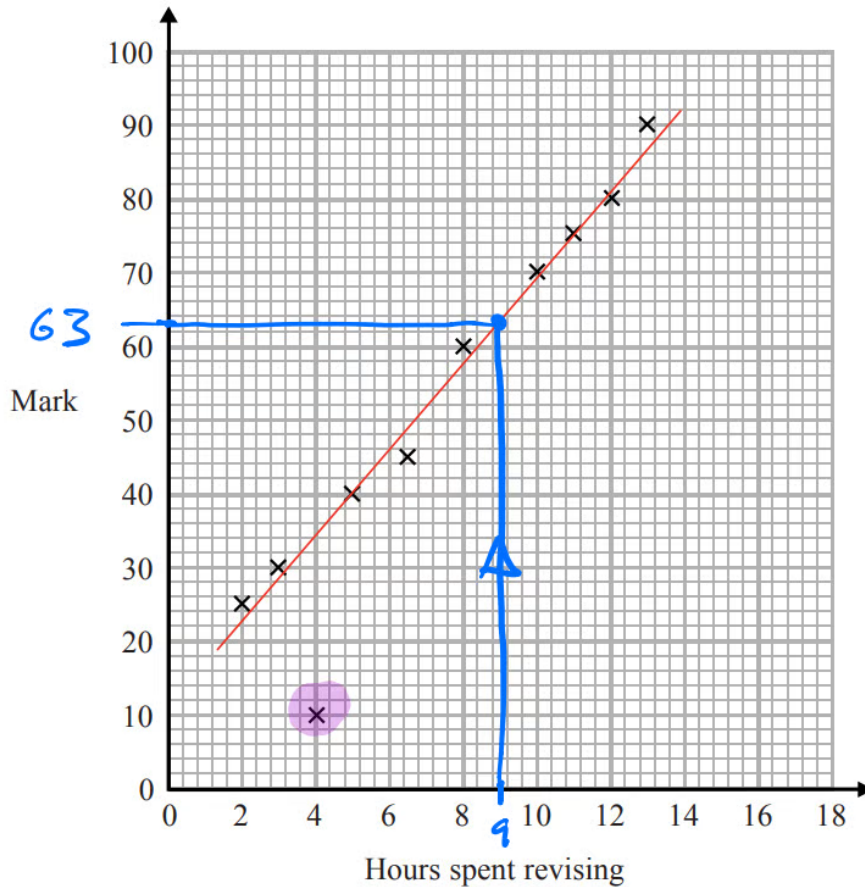
20 minutes



Answer 15

The scatter diagram shows information about 10 students.

For each student, it shows the number of hours spent revising and the mark the student achieved in the Spanish test.



One of the points is an outlier.

(a) Write down the coordinates of the outlier.

(4, 10)