



EXAM PAPERS PRACTICE

GCSE OCR Math J560

Drawing Graphs

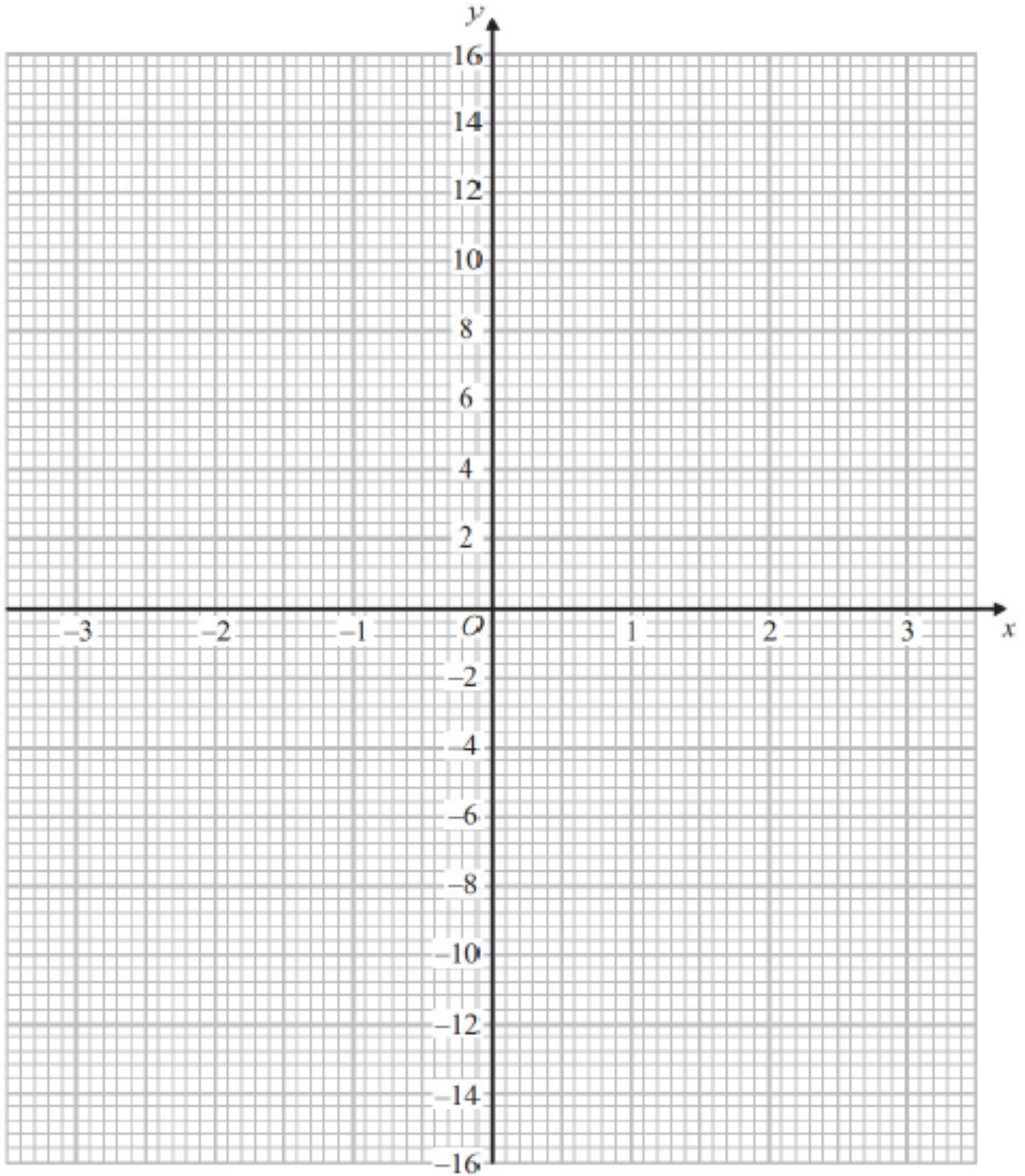
Question Paper

*"We will help you to
achieve A Star "*



Question 1

(b) On the grid, draw the graph of $y = x^3 - 4x$ from $x = -3$ to $x = 3$

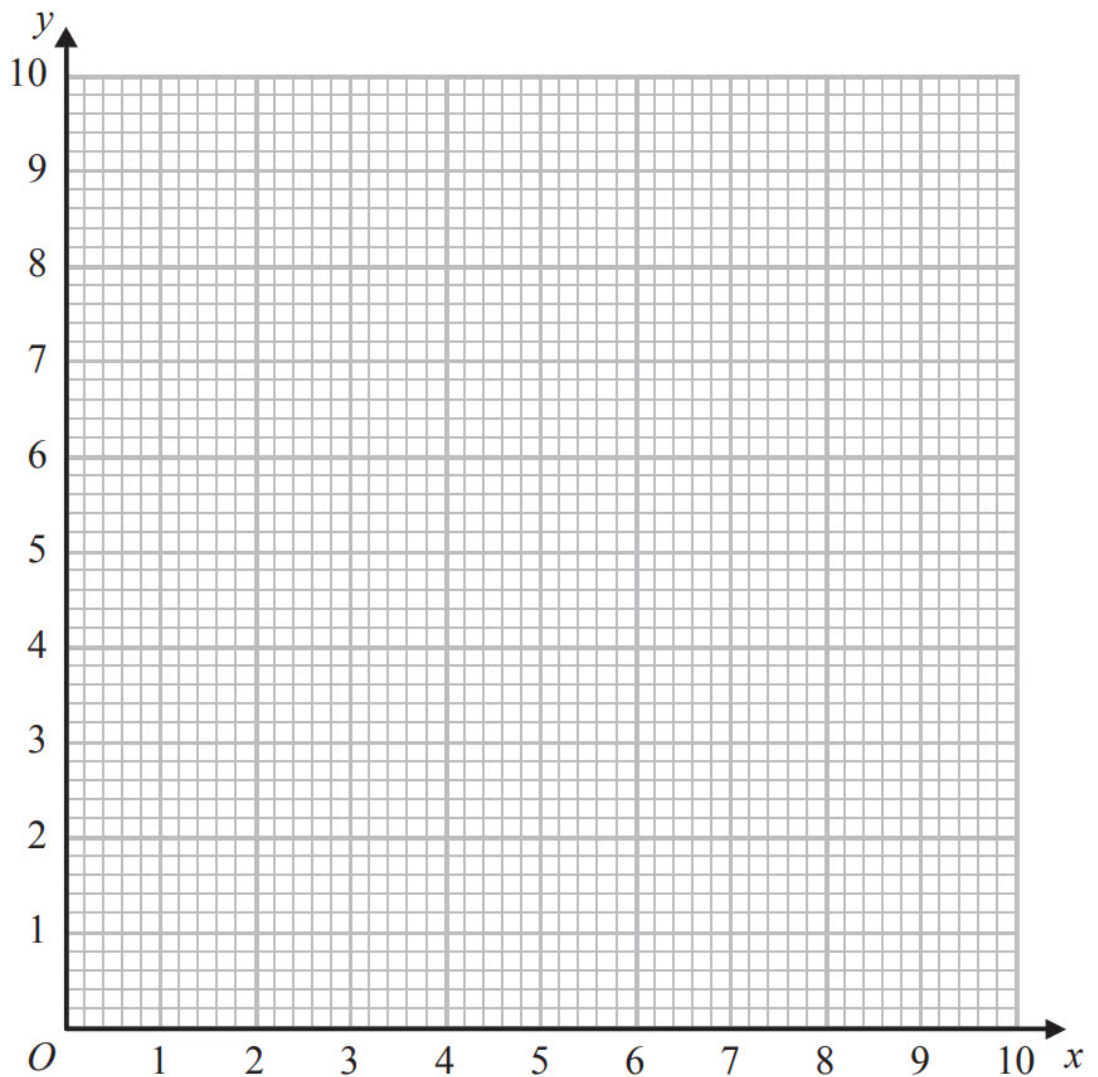


[2 marks]



Question 2

(b) On the grid, draw the graph of $y = \frac{4}{x}$ for $0.5 \leq x \leq 8$

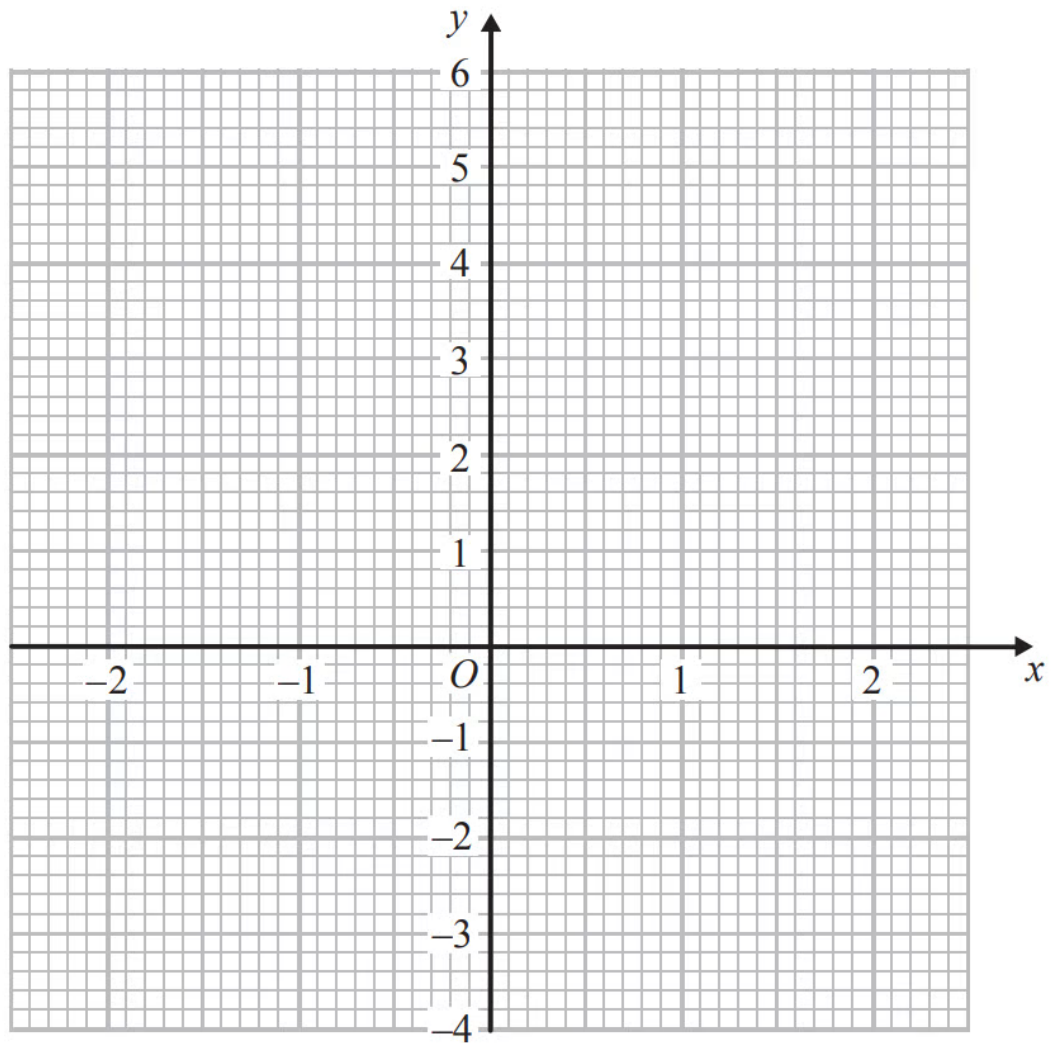


[2 marks]



Question 3

(b) On the grid, draw the graph of $y = x^3 - 3x + 1$ for values of x from -2 to 2

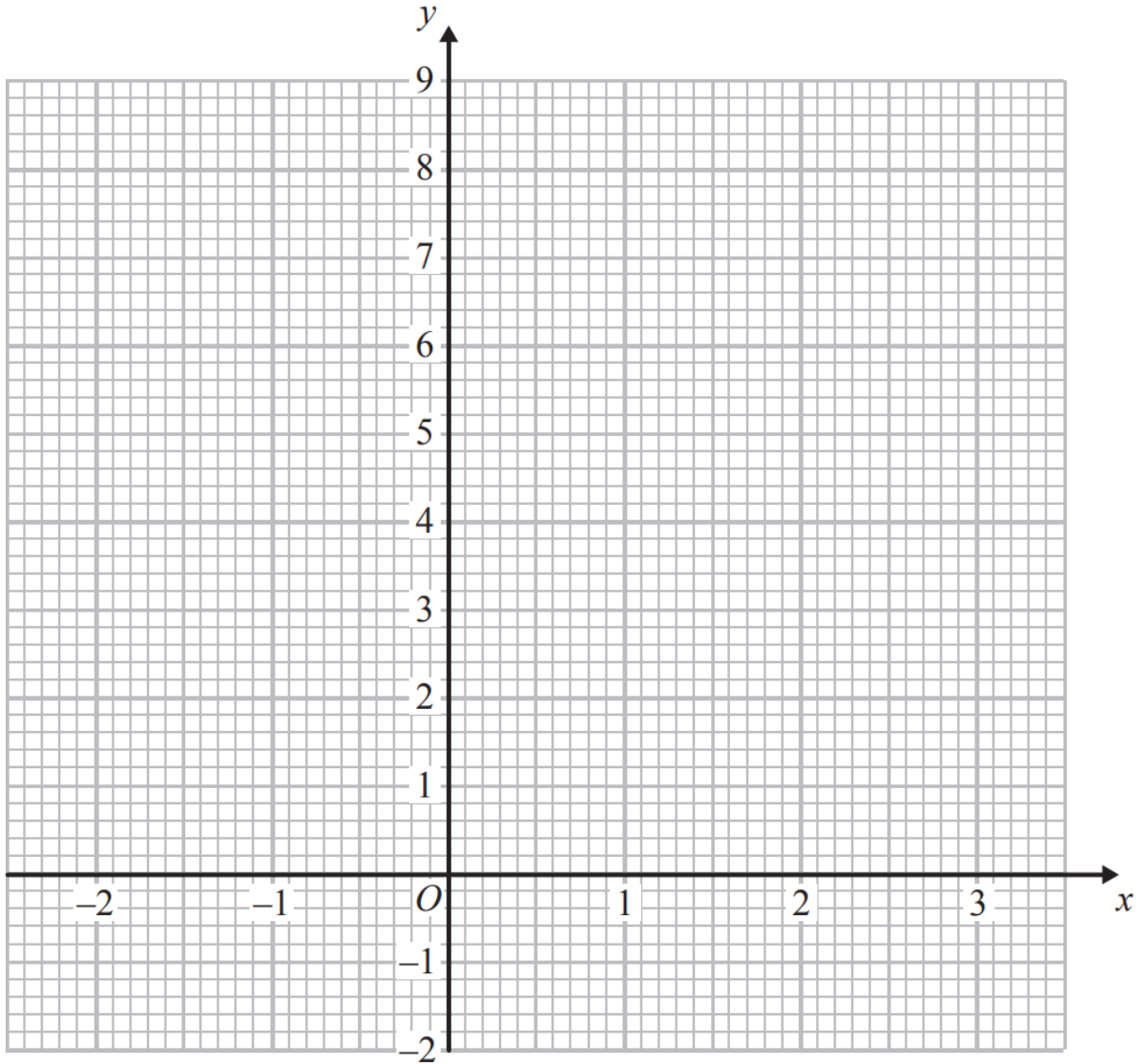


[2 marks]



Question 4

(b) On the grid, draw the graph of $y = 2^x$ for values of x from -2 to 3

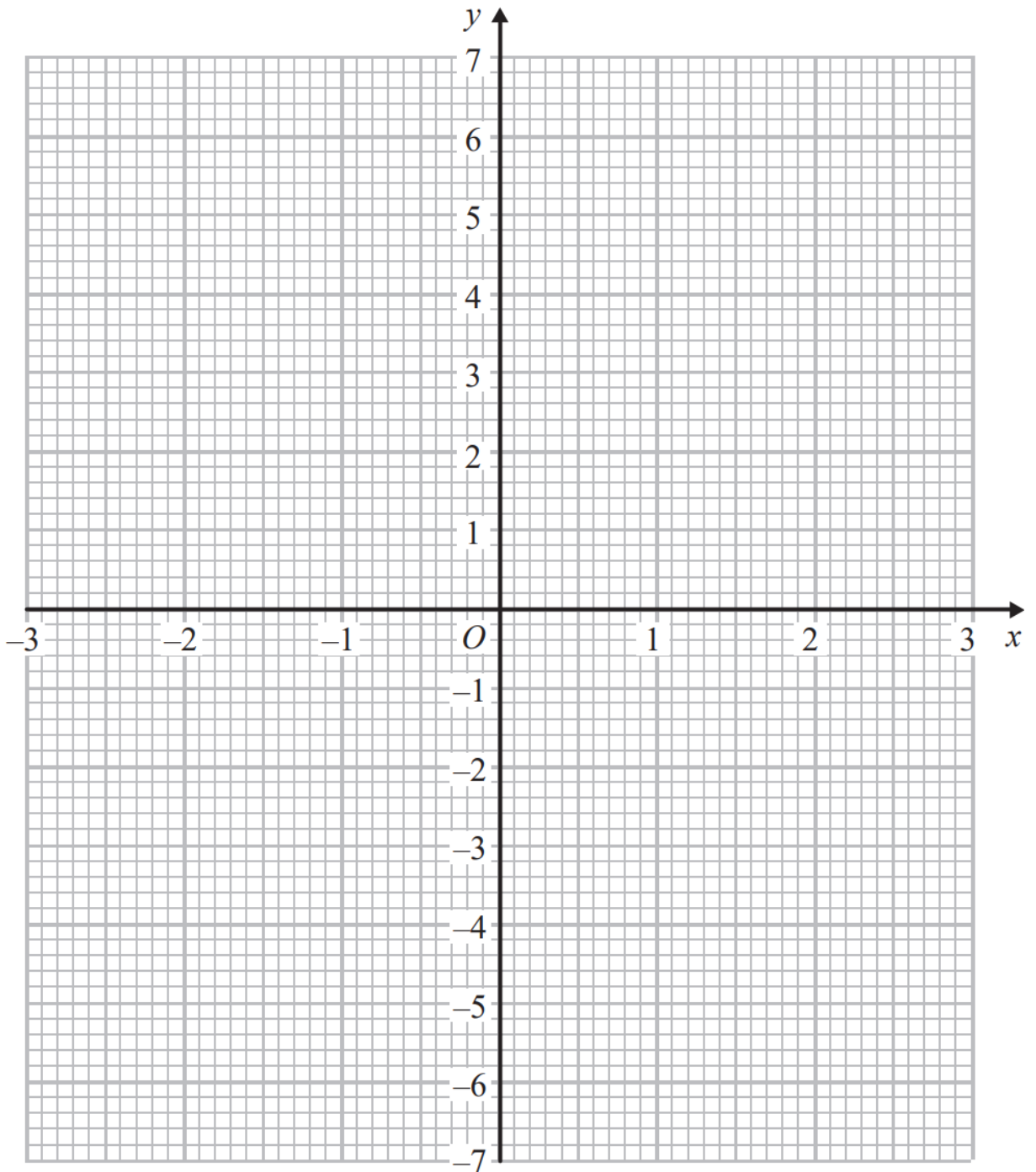


[2 marks]



Question 5

(b) On the grid, draw the graph of $y = x^2 - x - 6$ for values of x from -3 to 3



[2 marks]



Question 6

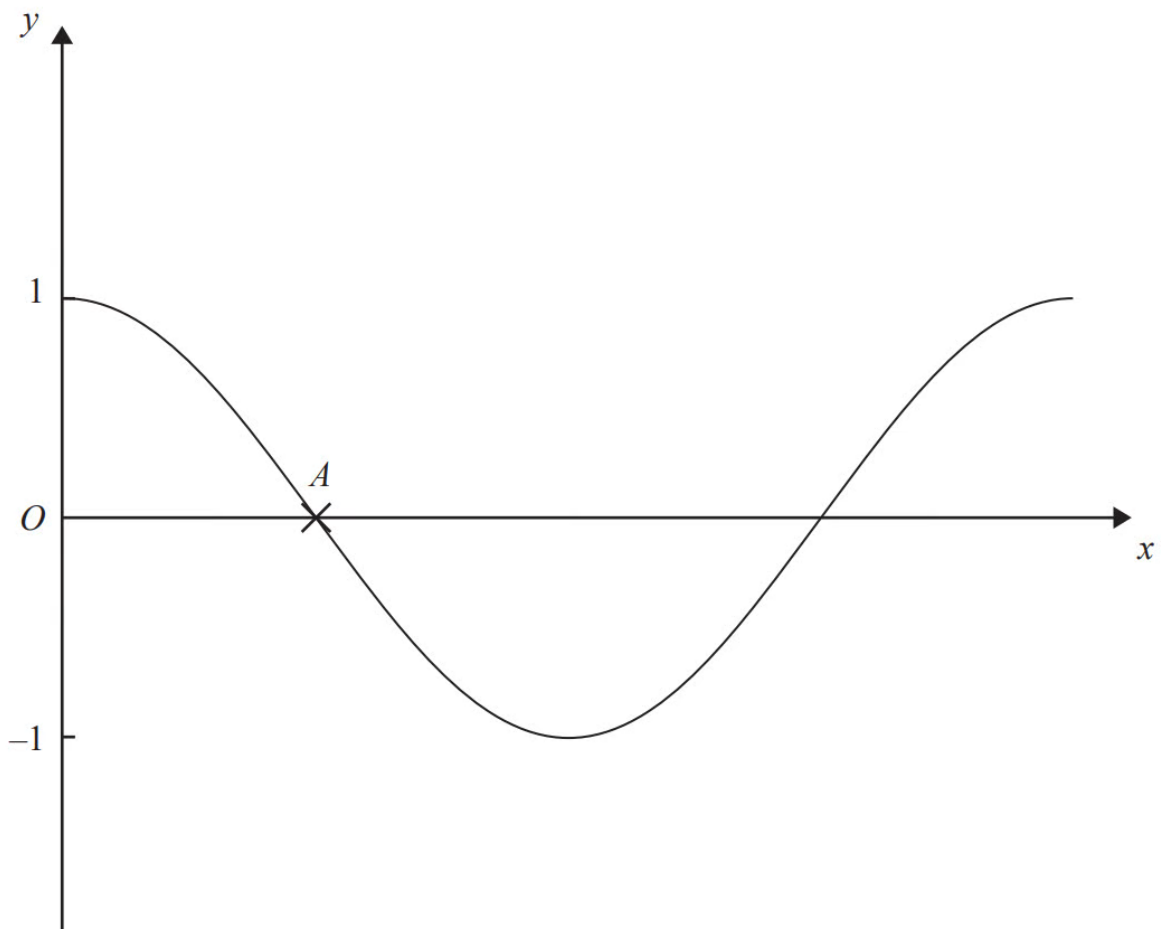
(a) Complete the table of values for $y = \frac{6}{x}$

x	0.5	1	2	3	4	5	6
y		6	3		1.5		1

[2 marks]

Question 7

The diagram shows a sketch of the graph of $y = \cos x$.



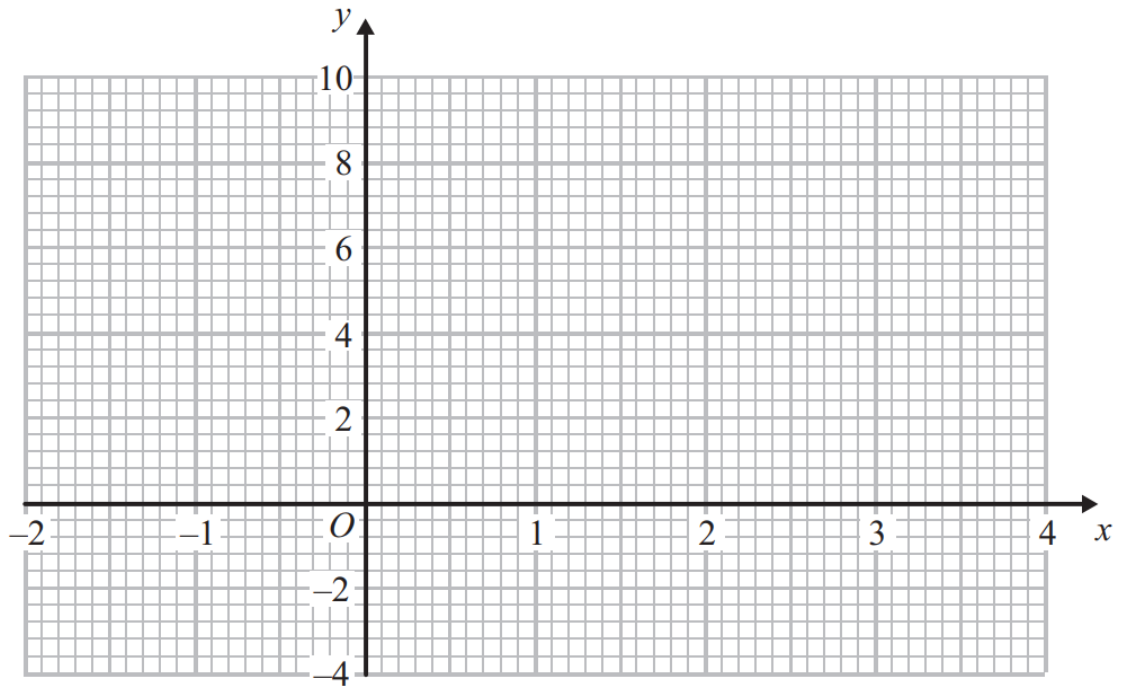
(a) Write down the coordinates of the point A .

[1 mark]



Question 8

(b) On the grid, draw the graph of $y = x^2 - 2x$ for values of x from -2 to 4



[2 marks]



Question 9

(a) Complete the table of values for $y = x^2 - 2x - 1$

x	-2	-1	0	1	2	3	4
y	7			-2	-1		

[2 marks]

Question 10

(c) Solve $x^2 - 2x - 1 = x + 3$

[2 marks]

Question 11

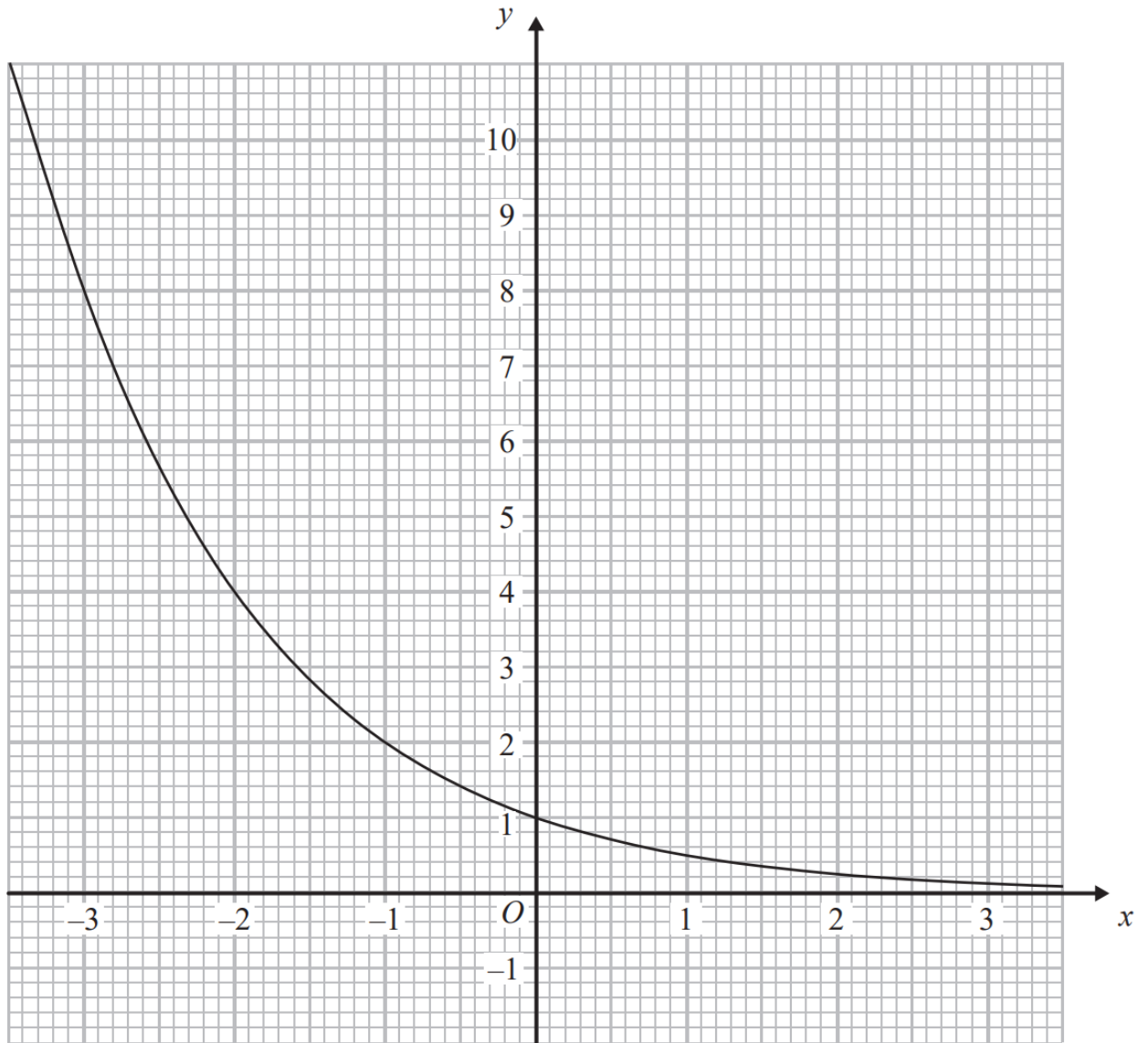
(b) Find estimates for the solutions of the simultaneous equations

$$\begin{aligned}x^2 + y^2 &= 16 \\ y &= 2x + 1\end{aligned}$$

[3 marks]



Question 12



The graph of $y = k^x$, where k is a positive constant, is shown above.

(a) Find the value of k .

[2 marks]



Question 13

(a) Complete the table of values for $y = x^2 - 2x$

x	-2	-1	0	1	2	3	4
y		3	0			3	

[2 marks]

Question 14

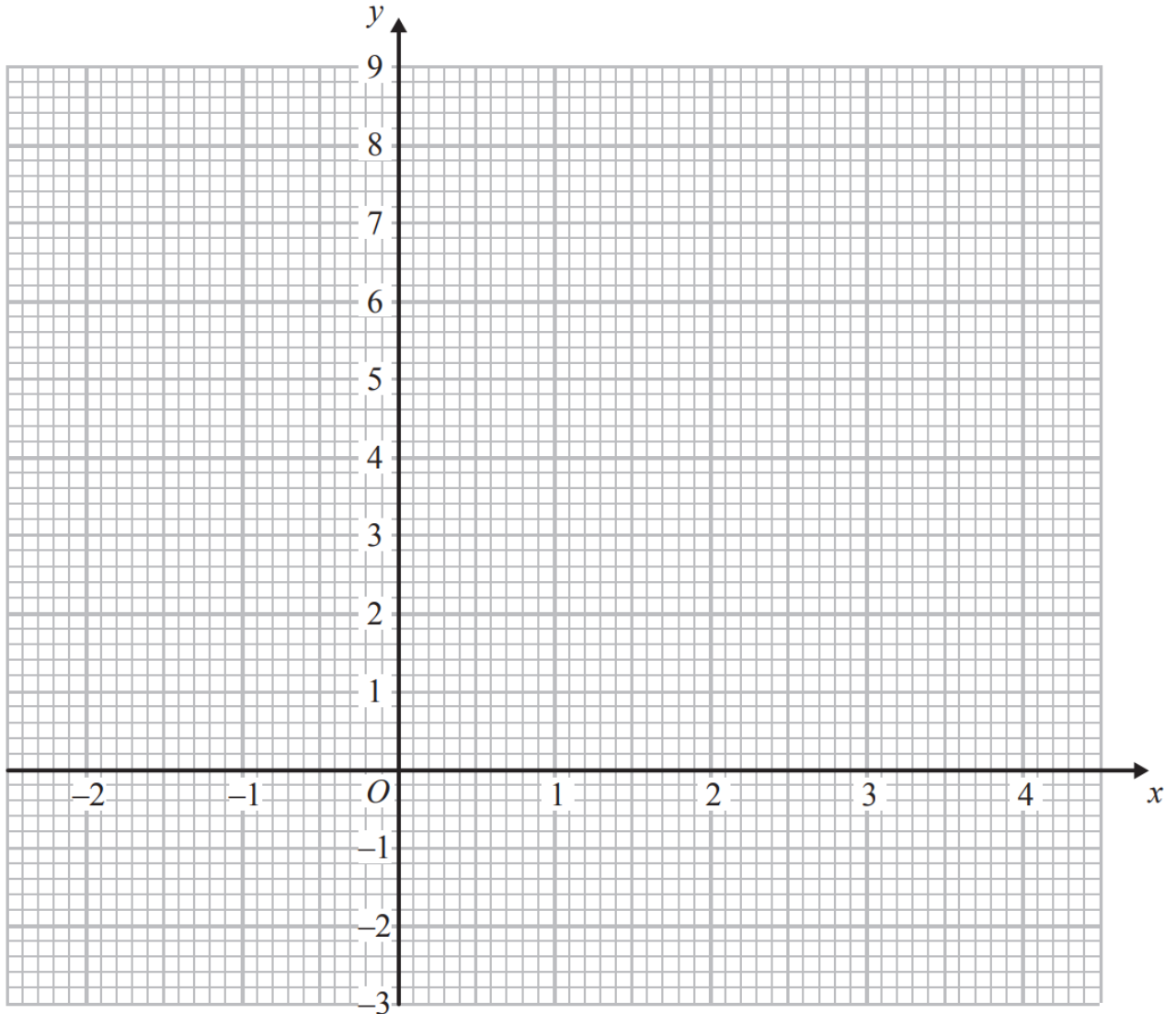
(c) Solve $x^2 - 2x - 2 = 1$

[2 marks]



Question 15

(b) On the grid, draw the graph of $y = x^2 - 2x - 1$ for values of x from -2 to 4



[2 marks]