



EXAM PAPERS PRACTICE

Boost your performance and confidence
with these topic-based exam questions

Practice questions created by actual
examiners and assessment experts

Detailed mark scheme

Suitable for all boards

Designed to test your ability and

3.4 Genetic Modification & Biotechnology

Easy



BIOLOGY

IB HL

3.4 Genetic Modification & Biotechnology

Question Paper

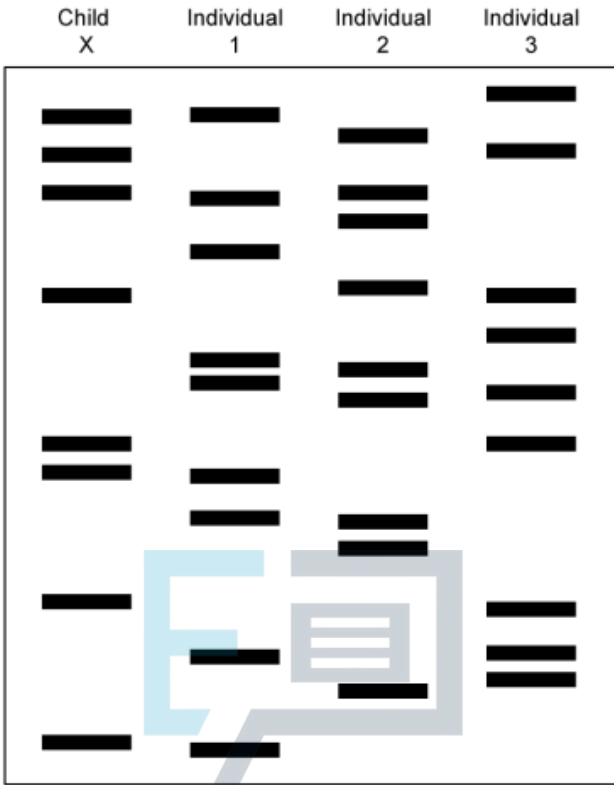
Course	DP IB Biology
Section	3. Genetics
Topic	3.4 Genetic Modification & Biotechnology
Difficulty	Easy

EXAM PAPERS PRACTICE

Time allowed: 10
Score: /5
Percentage: /100

Question 1

With reference to the DNA profile shown, which two individuals are the parents of child X?



- A. 1 and 3
- B. 1 and 2
- C. 2 and 3
- D. Individual 1 (only one parent is shown)

[1 mark]

Question 2

Which option correctly completes the sentence below?

In gel electrophoresis, DNA moves towards the _____.

- A. Cathode
- B. Negatively charged electrode
- C. Anode
- D. Tiny pores in the gel

[1 mark]

Question 3

Which of the following processes takes place in a thermal cycler?

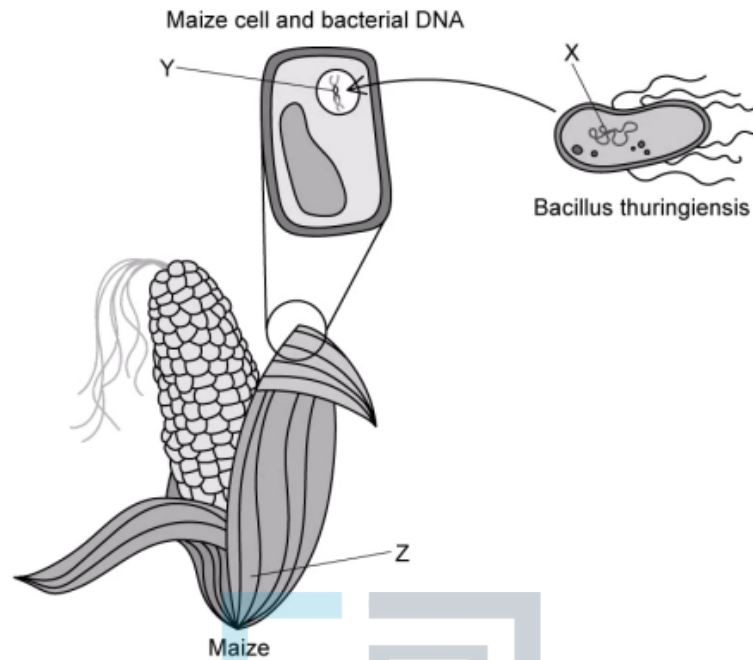
- A. Genetic modification
- B. Polymerase chain reaction
- C. Gel electrophoresis
- D. Genetic fingerprinting

[1 mark]



Question 4

Which row correctly labels letters **X**, **Y** and **Z** in the diagram of genetic modification shown?



	X	Y	Z
A	Transgenic organism	Vector	Recombinant DNA
B	Recombinant DNA	Transgenic organism	Vector
C	Recombinant DNA	Vector	Transgenic organism
D	Required gene sequence	Recombinant DNA	Transgenic organism

[1 mark]

Question 5

Which of the following gives an example of artificial cloning?

- A. Production of runners
- B. Somatic cell transfer
- C. Monozygotic twins
- D. Parthenogenesis

[1 mark]