



EXAM PAPERS PRACTICE

Boost your performance and confidence
with these topic-based exam questions

Practice questions created by actual
examiners and assessment experts

Detailed mark scheme

Suitable for all boards

Designed to test your ability and

6.1 Digestion & Absorption

Easy



BIOLOGY

IB HL

6.1 Digestion & Absorption

Question Paper

| | |
|------------|----------------------------|
| Course | DP IB Biology |
| Section | 6. Human Physiology |
| Topic | 6.1 Digestion & Absorption |
| Difficulty | Easy |

EXAM PAPERS PRACTICE

Time allowed: 10
Score: /5
Percentage: /100

Question 1

Which row correctly identifies the role of each enzyme?

| | | | |
|-----------|-------------------------------------|---|---|
| A. | Amylase digests starch into maltose | Dipeptidase digests dipeptides into amino acids | Phospholipase digests phospholipids into fatty acids and glycerol |
| B. | Amylase digests starch into maltase | Dipeptidase digests longer polypeptides into shorter polypeptides | Lipase digests triglycerides into fatty acids and glycerol |
| C. | Amylase digests starch into glucose | Protease digests longer polypeptides into shorter polypeptides | Phospholipase digests phospholipids into fatty acids, glycerol, and phosphate |
| D. | Amylase digests starch into maltose | Dipeptidase digests dipeptides into amino acids | Lipase digests triglycerides into fatty acids and glycerol |

[1 mark]

Question 2

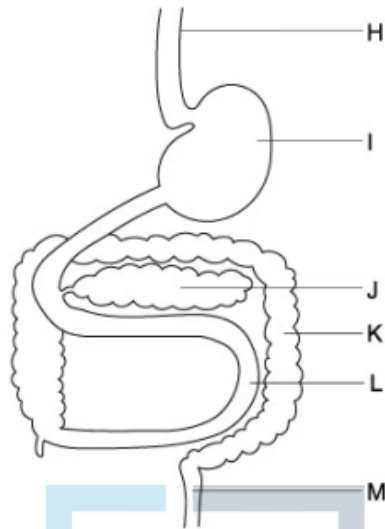
Which of the statements about villi is correct?

- A. The cell surface membranes on the capillary side of the villus epithelium are folded into microvilli.
- B. The cell surface membranes on the capillary side of the villus epithelium have transport proteins in their cell surface membranes.
- C. Villi epithelium contains goblet cells for the secretion of surfactant.
- D. The useful products of digestion are all moved into the cells of the villi epithelium down their concentration gradient.

[1 mark]

Question 3

The diagram shows a representation of the human digestive system.

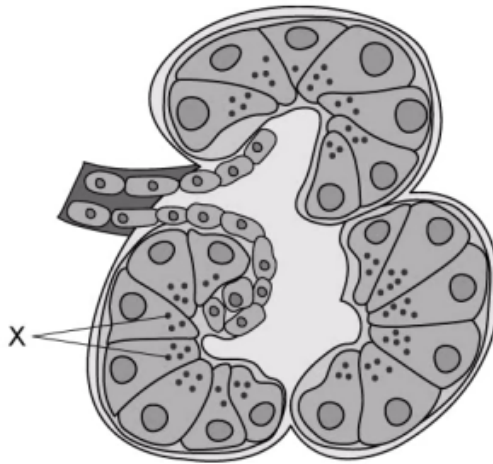


Which of the labelled organs are involved with the digestion of lipids?

- A. J and L.
- B. I, J, and L.
- C. I and J.
- D. L and K.

Question 4

The diagram shows part of the pancreas.



What are the structures labelled X?

- A. Acinar cells
- B. Islets of Langerhans
- C. Duct cells
- D. Secretory vesicles

[1 mark]

Question 5

Which of the following statements about the absorption of nutrients are correct?

- I. Nutrients pass from the small intestine lumen to the blood via epithelium cells.
- II. Triglycerides enter the capillaries by exocytosis.
- III. Glucose uses facilitated diffusion, active transport, co-transport, and simple diffusion to enter the capillaries.

- A. I only.
- B. I and II only.
- C. I, II, and III.
- D. II and III only.

[1 mark]