



EXAM PAPERS PRACTICE

Boost your performance and confidence
with these topic-based exam questions

Practice questions created by actual
examiners and assessment experts

Detailed mark scheme

Suitable for all boards

Designed to test your ability and

Set A

Practice Paper 2



BIOLOGY

IB HL

Practice Paper 2

Question Paper

Course	DPIB Biology
Section	Set A
Topic	Practice Paper 2
Difficulty	Medium

Time allowed: 60

Score: /50

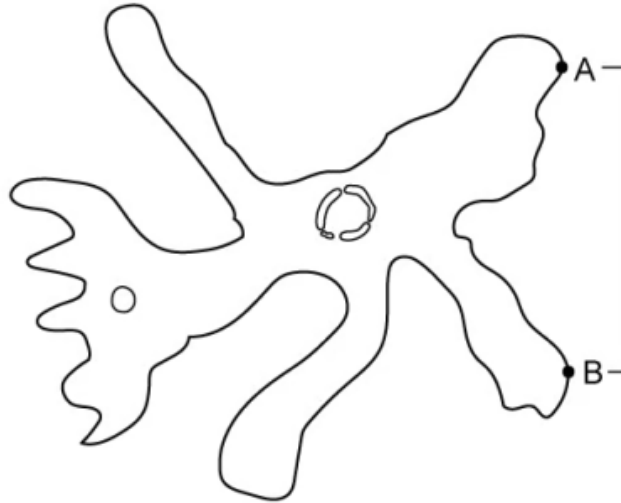
Percentage: /100

Question 1a

a)

The diagram below is of an *Amoeba*. The actual size, measured between points **A** and **B**, is $320\text{ }\mu\text{m}$.

When a student measured the same distance using an image from a microscope they determined the size to be $128\,000\text{ }\mu\text{m}$.



Calculate the magnification of this *Amoeba*. Show your working.

[2 marks]

[2 marks]

Question 1b

b)

Whilst examining the *Amoeba*, the student also measured the length of the organelles present, including the nucleus. The length of the nucleus on the microscope image was 28 000 μm .

If the student was examining the nucleus using the same magnification as part (a), in millimetres (mm), calculate the actual size of the nucleus.

[2 marks]

[2 marks]

Question 1c

c)

The freshwater habitats of *Amoeba proteus* may contain organisms that have more complex structures eg. freshwater snails. The snails have primitive gills enabling them to breathe under water and mucus-producing glands that allow them to hibernate when the water freezes.

Independently these structures have different properties but when combined they provide the snails with survival properties in the aquatic environment.

State the type of property that multicellular organisms, like the freshwater snail, have.

[1 mark]

[1 mark]

Question 2a

a)

Rhododendron ponticum (pictured below) is a fast-growing, non-native, invasive species currently threatening biodiversity in the UK.



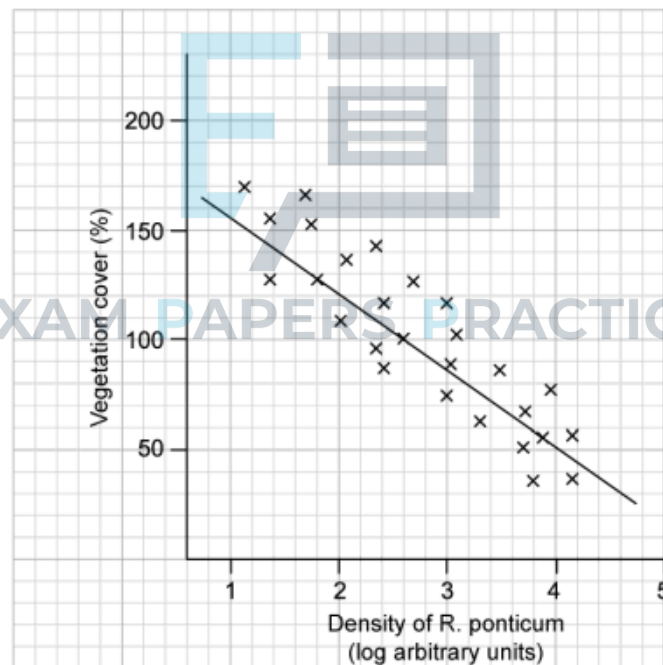
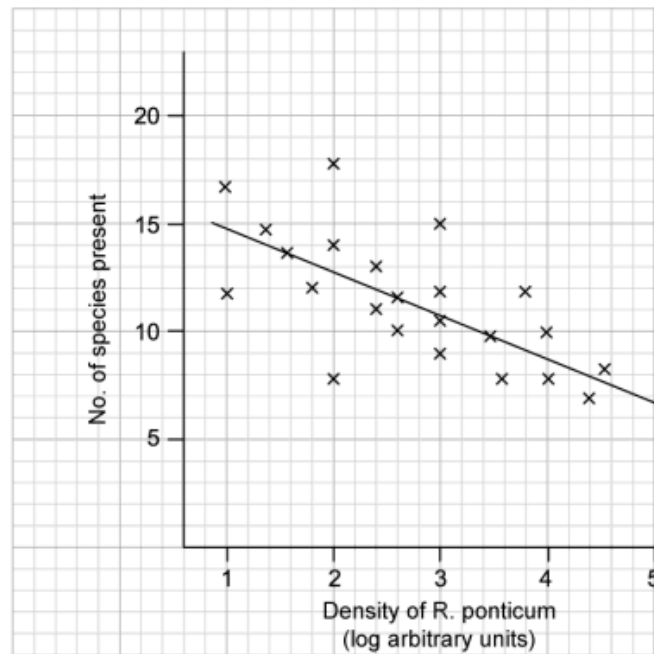
Rhododendron ponticum

Originally introduced from Spain as a decorative plant for gardens, *R. ponticum* forms large thickets and outcompetes native plants such as bryophytes, other woody plants and wildflowers. Particularly severely affected are Atlantic oak woodland areas of coastal land in the western United Kingdom. Clearance programmes to remove *R. ponticum* have been in place for approximately 30 years in that region. Data was gathered on how the removal of *R. ponticum* allows for affected sites to recover and for native species to be restored.

A quadrat study was carried out at three sites:

- An area of dense *Rhododendron ponticum* thickets
- An area of intermediate *ponticum* coverage
- An area of uninvaded land as a control

In each study, the number of species in each area's understorey was counted, as well as the % vegetation cover. This data is shown on the graphs below, which have been plotted with a line of best fit.



Calculate the range of species found at a *R. ponticum* density of 2 log arbitrary units.

[1 mark]

Question 2b

- b)
State how the % vegetation cover can exceed 100% in a given area.

[1 mark]

Question 2c

- c)
Suggest why a log scale is used to show the density of *R. ponticum* in the graphs.

[1 mark]

Question 2d

- d)
Explain the decline in the number of species found as the density of *R. ponticum* increases, as found in this study.

[1 mark]

Question 2e

- e)
Suggest **two** ways in which *R. ponticum* could affect competition.

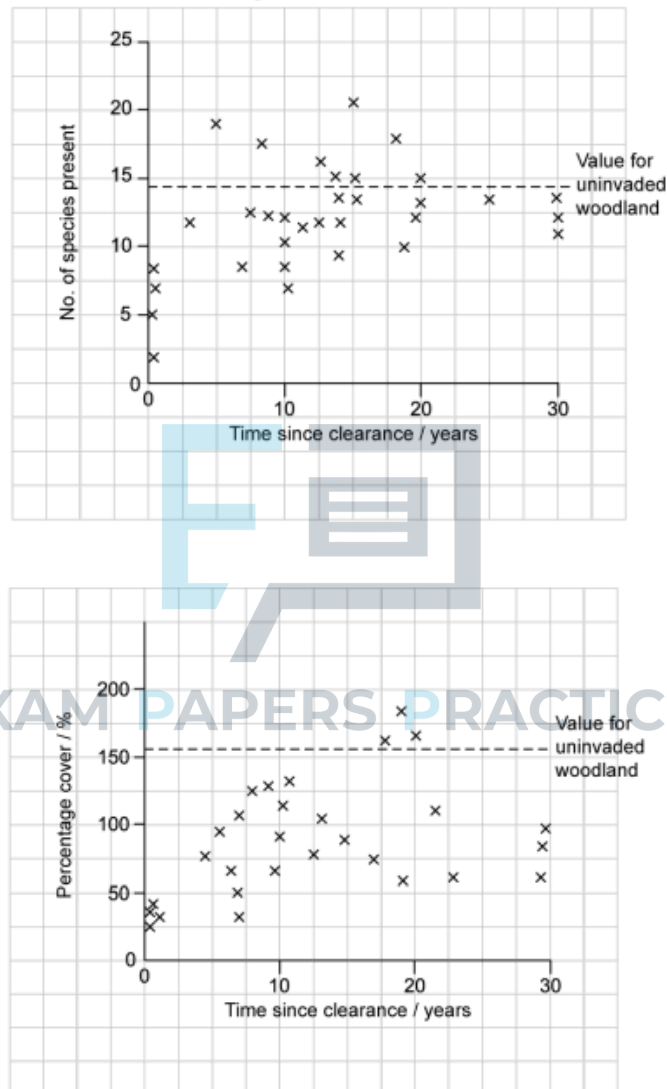
[2 marks]



Question 2f

f)

In an extension of this study, the spread of epiphytes (plants that grow on other plants, but not parasitically) was examined as a function of the time elapsed since the human clearance of *R. ponticum* from an area of ancient woodland. Typical taxa of epiphytes include mosses and liverworts. This was done to estimate how well a woodland habitat could recover from an invasion by *R. ponticum*. One theory is that *R. ponticum* can affect successive species long after all its biomass has been cleared away from a site. The results are shown in the diagram below.



Estimate the number of years before the number of species found on cleared land first exceeded the number of species found in uninvaded woodland.

[1 mark]

Question 2g

- g)
- Discuss whether the clearance of a *R. ponticum* invasion has an impact on the recovery of the woodland habitat.
 - Suggest a reason for any impact observed.

**Question 2h**

h)

In a further study, a series of measured soil core samples were taken from thirty sites within the Atlantic woodland

- 10 sites uninvaded by *R. ponticum*
- 10 sites cleared of *R. ponticum* more than 10 years previously
- 10 sites of dense *R. ponticum* coverage

The seeds contained within those samples were germinated in a laboratory greenhouse to display which species were present as ungerminated seeds in the soils. The study ran for 20 weeks. Control trays containing sterile compost showed negligible seedling growth.

The table below shows a summary of the results obtained.

Species		No of seedlings emerging in greenhouse trial	Number of sites where ungerminated seeds were found		
			Uninvaded	Cleared	Dense <i>R. ponticum</i> growth
European Poplar	<i>Populus tremula</i>	2 959	10	10	10
Rushes sp.	<i>Juncus sp.</i>	624	10	7	8
<i>R. ponticum</i>	<i>Rhododendron ponticum</i>	302	0	10	5
Broadleaf carpet grass	<i>Axonopus compressus</i>	402	10	2	3
Small cow wheat	<i>Melampyrum sylvaticum</i>	333	4	2	2
Others		2 566	125	51	42
		7 186	159	82	70

i)

Identify the species that was sampled on the fewest sites when the *R. ponticum* growth was densest.

ii)

Explain what this data shows for the prospects of growth of broadleaf carpet grass (*Axonopus compressus*) on cleared land following an *R. ponticum* invasion.

[3 marks]

Question 2i

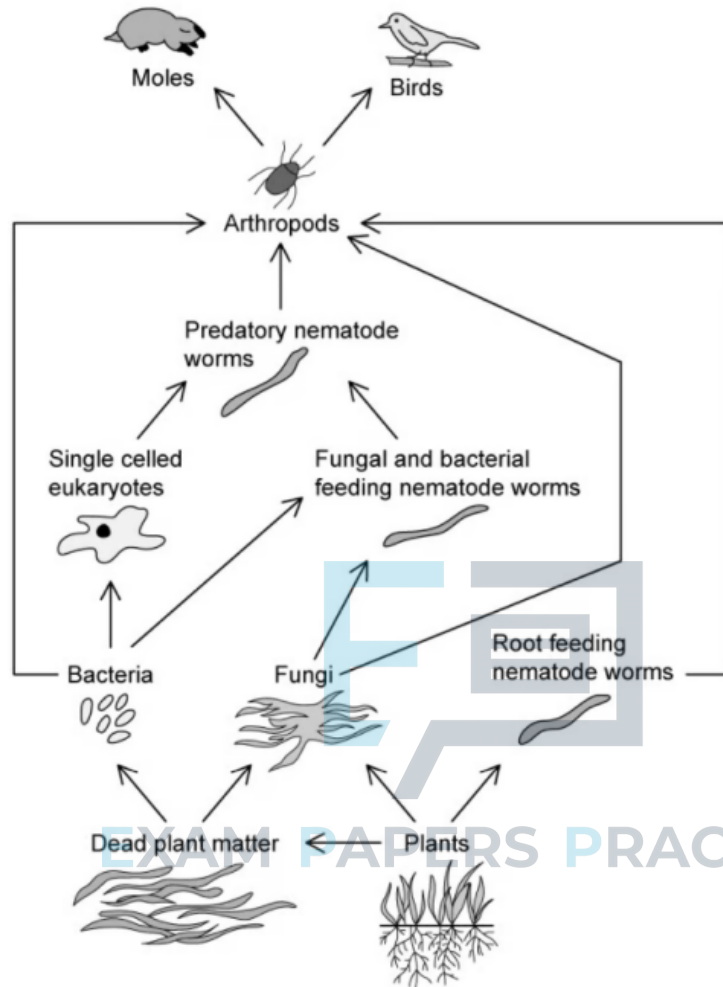
i)

Using the data in part (h), identify, with a reason, the species that benefited most from the clearance of *R. ponticum* from Atlantic coastal woodland.

[1 mark]

Question 3a

a) The diagram below shows a soil food web.



State the specific mode of nutrition used by the following organisms:

- i. Plants
- ii. Fungi
- iii. Root feeding nematode worms

[3 marks]



Question 3b

- b) Draw a food chain that includes bacteria from the food web shown above.

[1 mark]

Question 3c

- c) The longest food chain in the food web above contains 7 organisms. Explain why it is unusual to see food chains of this length.

[2 marks]

Question 3d

- d) Outline how the soil food web will be affected by a farmer harvesting crop plants from a field.

[3 marks]



Question 4a

a)

Haemophilia B is a rare genetic disorder where the body produces very little or no factor IX, a protein that is responsible for a cascade of reactions resulting in the conversion of fibrinogen into fibrin.

Explain the effect of insufficient levels of factor IX on the process of blood clotting.

[2 marks]

[2 marks]

Question 4b

b)

A person suffering from haemophilia B will be more prone to excessive bruising.

Based on the information provided, suggest a reason for this.



[1 mark]

[1 mark]

Question 4c

c)

Haemophilia B cannot be cured but one form of treatment involves injecting patients with factor IX, which is derived either from donated blood or artificially produced using genetic engineering.

Explain the importance of determining the correct dosage of factor IX before injecting patients.

[2 marks]

[2 marks]

Question 4d

d)

In certain rare cases, the body may produce antibodies against factor IX that is injected during replacement therapy,

Suggest **one** effect these antibodies may have on the treatment.

[1 mark]

[1 mark]

Question 5a

One mark is available for clarity of communication throughout this question.

a) Draw a labelled diagram to show a cell in the following stages of meiosis:

- Metaphase I
- Prophase I



[4 marks]

EXAM PAPERS PRACTICE

Question 5b

b) Outline how developments in scientific methods facilitated the discovery of meiosis.

[4 marks]

Question 5c

- c) Explain how genetic variation may be introduced into a population.

[8 marks]