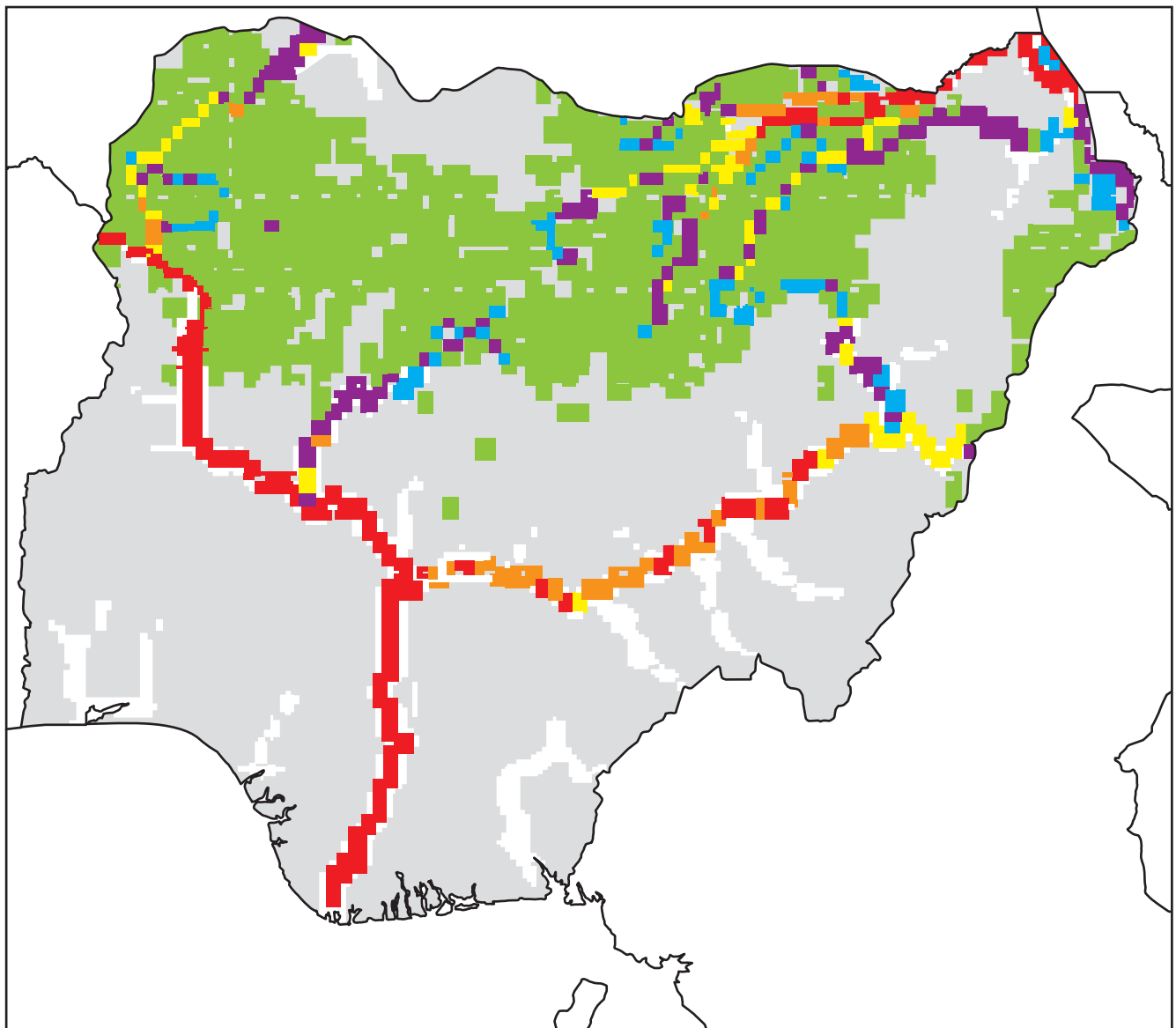
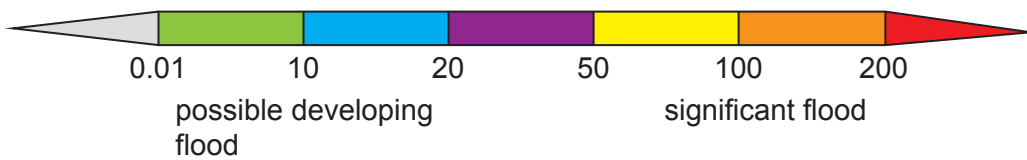


Fig. 1.1 for Question 1

Areas with water levels above the flood threshold* in Nigeria, Africa, 7 September 2023

**Key**

water level above the flood threshold* (mm)



* Flood threshold is the water level at which a flood occurs.

Fig. 1.2 for Question 1

A map of Nigeria, Africa



Key

 river


 international boundary

Fig. 2.1 for Question 2

Albedos of different surfaces in an urban area

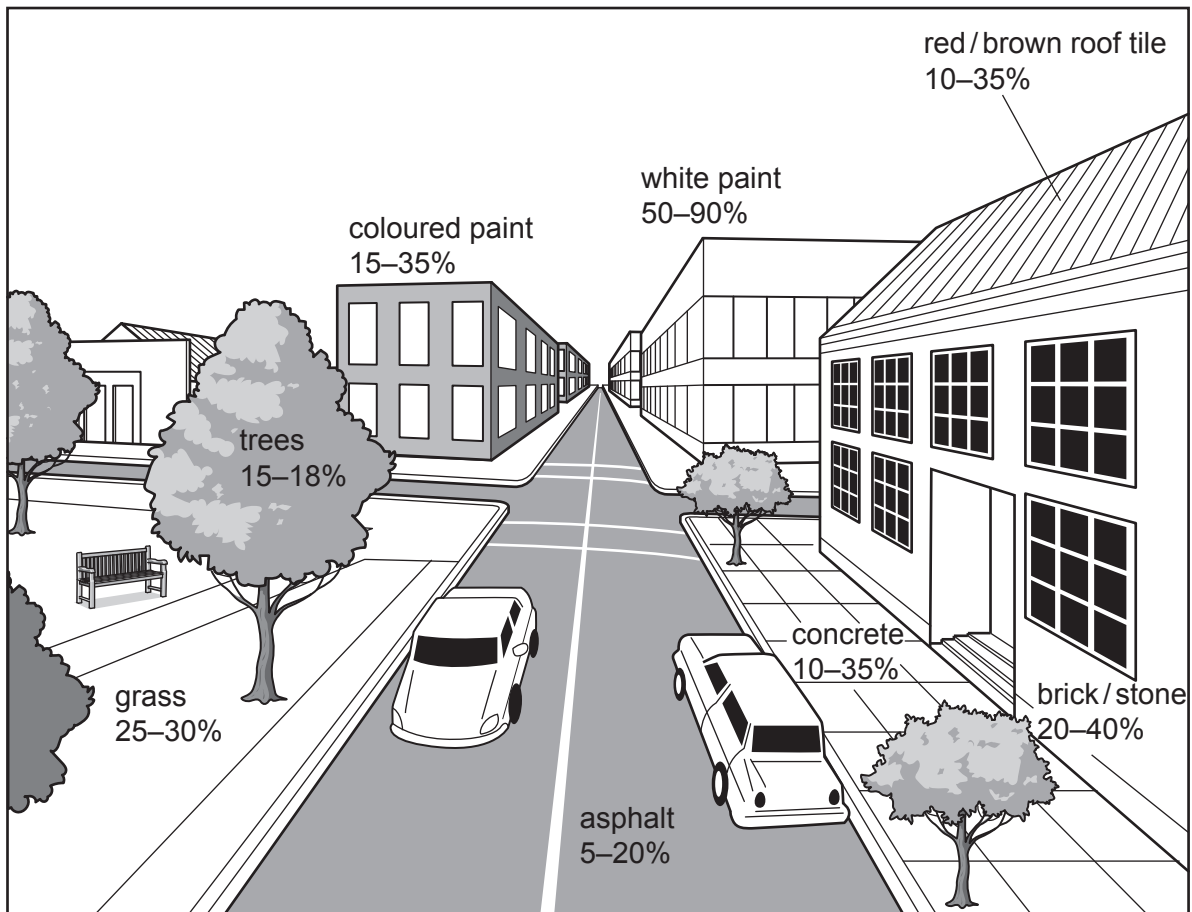
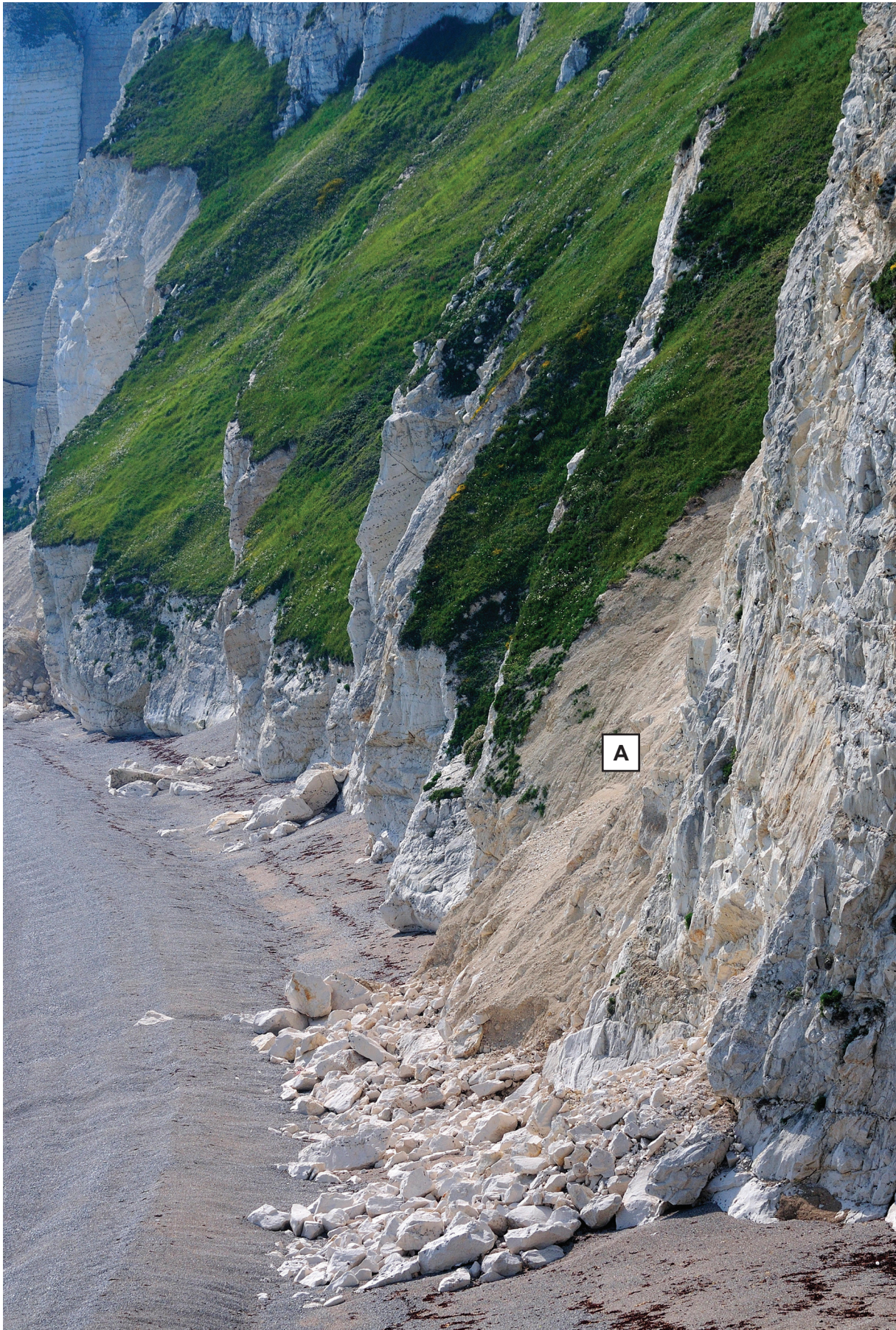


Fig. 3.1 for Question 3

Mass movements on a coast in the south of England, UK



BLANK PAGE

BLANK PAGE

BLANK PAGE

The boundaries and names shown, the designations used and the presentation of material on any maps contained in this question paper/insert do not imply official endorsement or acceptance by Cambridge Assessment International Education concerning the legal status of any country, territory, or area or any of its authorities, or of the delimitation of its frontiers or boundaries.

Permission to reproduce items where third-party owned material protected by copyright is included has been sought and cleared where possible. Every reasonable effort has been made by the publisher (UCLES) to trace copyright holders, but if any items requiring clearance have unwittingly been included, the publisher will be pleased to make amends at the earliest possible opportunity.

To avoid the issue of disclosure of answer-related information to candidates, all copyright acknowledgements are reproduced online in the Cambridge Assessment International Education Copyright Acknowledgements Booklet. This is produced for each series of examinations and is freely available to download at www.cambridgeinternational.org after the live examination series.

Cambridge Assessment International Education is part of Cambridge Assessment. Cambridge Assessment is the brand name of the University of Cambridge Local Examinations Syndicate (UCLES), which is a department of the University of Cambridge.