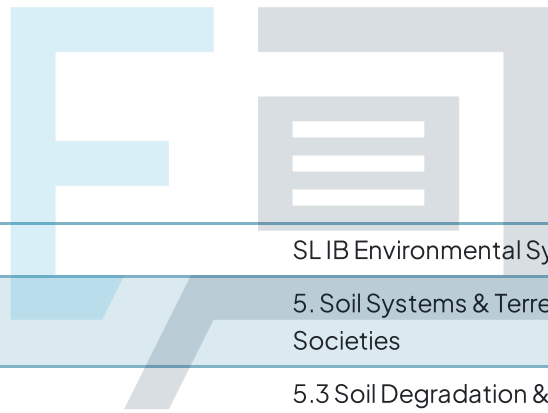




5.3 Soil Degradation & Conservation

Question Paper



Course	SL IB Environmental Systems & Societies (ESS)
Section	5. Soil Systems & Terrestrial Food Production Systems & Societies
Topic	5.3 Soil Degradation & Conservation
Difficulty	Medium

Exam Papers Practice

To be used by all students preparing for
SL IB Environmental Systems & Societies (ESS)
Students of other boards may also find this useful

Question 1

Explain how deforestation contributes to soil degradation.

[3 marks]

Question 2a

Outline how soil degradation can be caused by human activities other than deforestation.

[3 marks]

Question 2b

Explain how allowing arable farmland to remain fallow (unused) between growing seasons might contribute to soil degradation.

[2 marks]

Question 3a

The figure below shows information about desertification in Northern Africa.

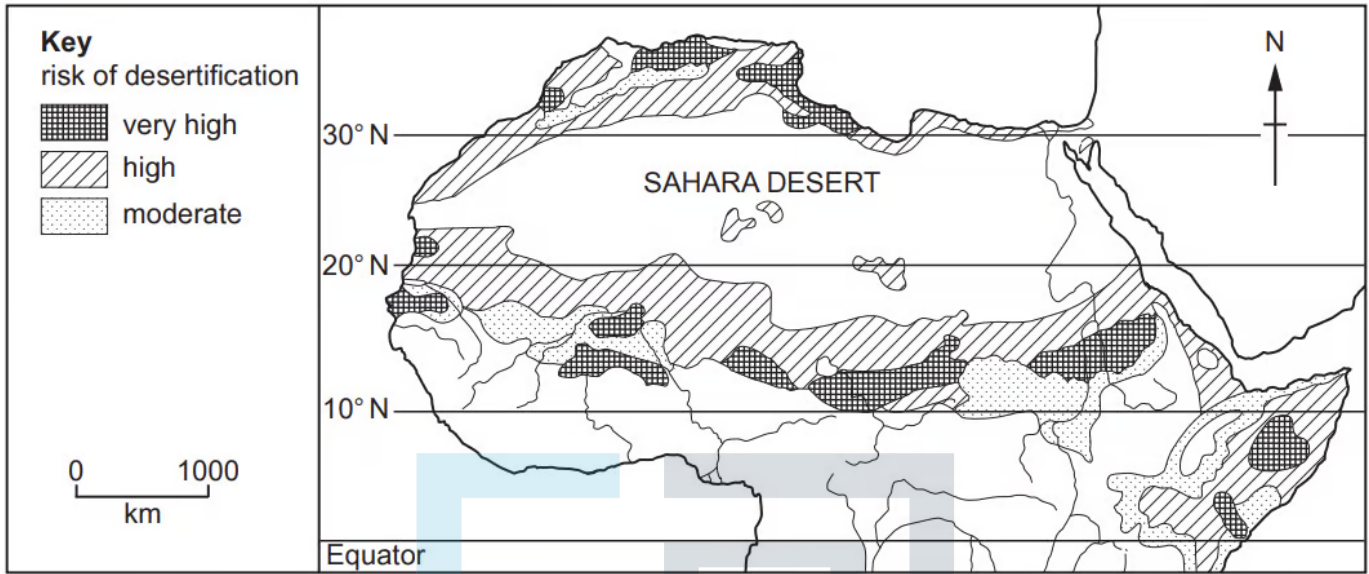


Fig. 6.2

Describe the distribution of the areas in Northern Africa where the risk of desertification is very high.

[3 marks]

Exam Papers Practice

Question 3b

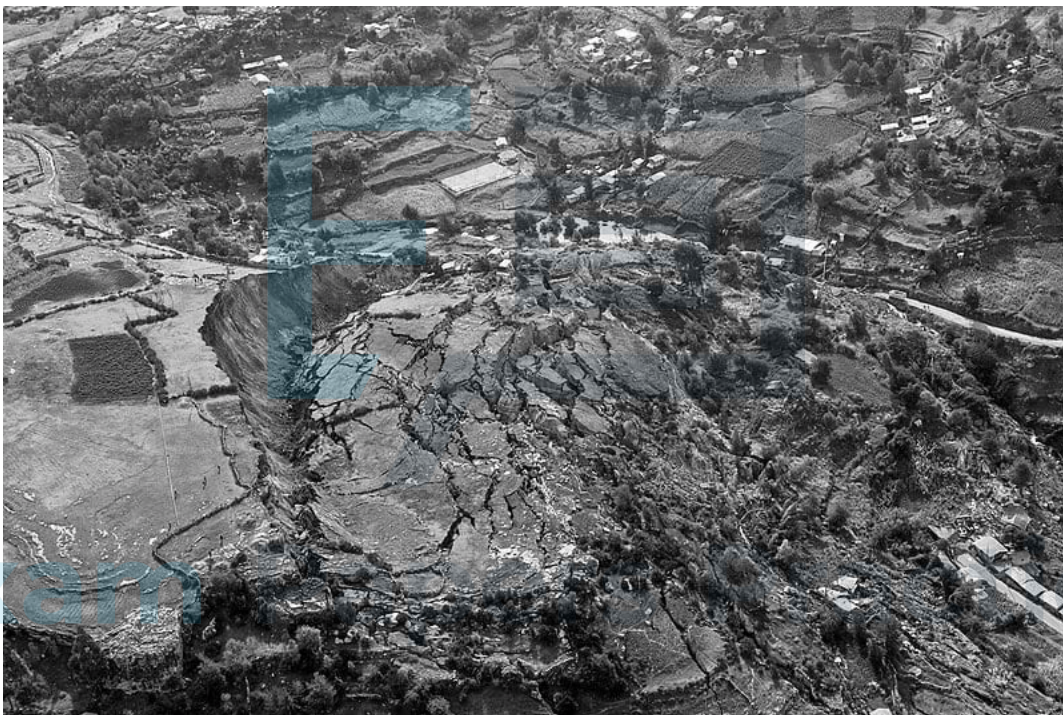
Describe the impacts of desertification on local people.

[5 marks]

Question 4

Landslides are often triggered by intense rainfall following a hurricane.

The photograph below depicts a landslide occurring in Cusco, Peru as a result of substantial rainfall on a steep incline.



Galería del Ministerio de Defensa del Perú, CC BY 2.0 <<https://creativecommons.org/licenses/by/2.0/>>, via Wikimedia Commons

Outline **one** method farmers in Peru could employ to mitigate soil erosion on hillsides and why this method would be beneficial.

[3 marks]