

Write your name here

Surname

Other names

Pearson
Edexcel GCSE

Centre Number

--	--	--	--	--

Candidate Number

--	--	--	--	--

Geography A

Unit 2: The Natural Environment

Higher Tier

Wednesday 3 June 2015 – Afternoon
Time: 1 hour 15 minutes

Paper Reference
5GA2H/01

You must have:
Resource Booklet (enclosed)

Total Marks

Instructions

- Use **black** ink or ball-point pen.
- **Fill in the boxes** at the top of this page with your name, centre number and candidate number.
- In Section **A** answer **all** questions.
- In Section **B** answer **either** question 4 **or** 5.
- Answer the questions in the spaces provided
– *there may be more space than you need.*

Information

- The total mark for this paper is 69.
- The marks for **each** question are shown in brackets
– *use this as a guide as to how much time to spend on each question.*
- Questions labelled with an **asterisk** (*) are ones where the quality of your written communication will be assessed
– *you should take particular care on these questions with your spelling, punctuation and grammar, as well as the clarity of expression.*
- The marks available for spelling, punctuation and grammar are clearly indicated.

Advice

- Read each question carefully before you start to answer it.
- Check your answers if you have time at the end.

Turn over ►

P44706RA

©2015 Pearson Education Ltd.

4/4/1/1/1/1



P 4 4 7 0 6 R A 0 1 2 4

PEARSON

SECTION A – THE PHYSICAL WORLD

Answer ALL questions in this section.

Topic 1: Coastal Landscapes

1 (a) Study Figure 1a.

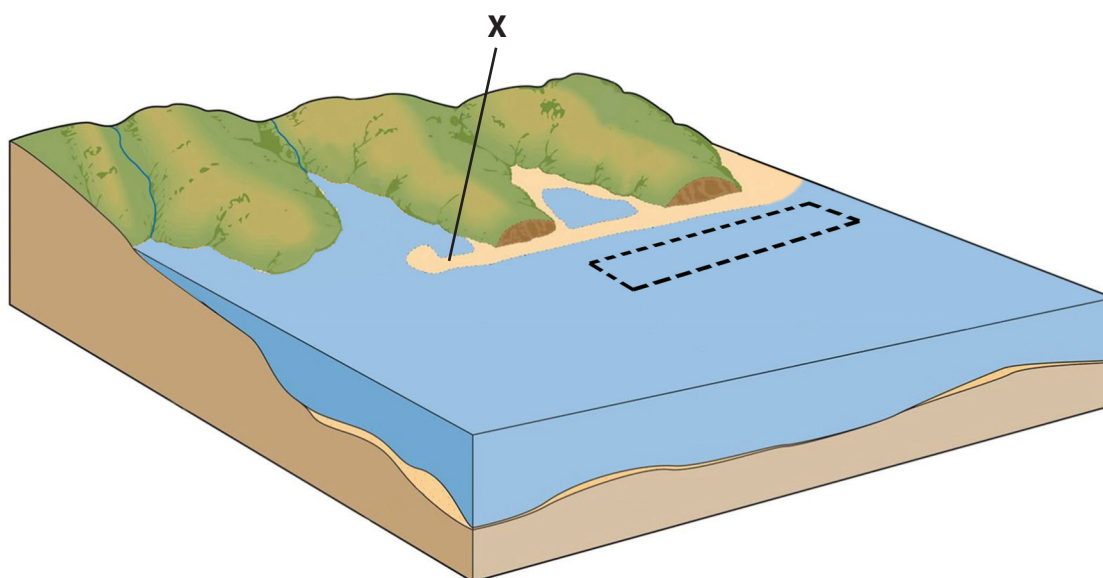


Figure 1a

Coastal landforms

- (i) Draw an arrow in the box on Figure 1a to show the direction of longshore drift. (1)
 - (ii) Identify landform X on Figure 1a. (1)
-



(b) Describe the formation of a bar.

You may use a diagram to help with your answer.

(3)

.....

.....

.....

.....

.....

.....



(c) Describe the differences between constructive and destructive waves.

You may use a diagram to help with your answer.

(4)

.....

.....

.....

.....

.....

.....

.....

.....

.....



***(d)** Study Figure 1b (photograph) in the Resource Booklet.

Explain how geology influences the formation of coastal landforms.

(6)

.....

.....

.....

.....

.....

.....

.....

.....

.....

.....

.....

.....

.....

.....

.....

.....

.....

.....

.....

.....

.....

.....

.....

(Total for Question 1 = 15 marks)



Topic 2: River Landscapes

2 (a) Study Figure 2a.

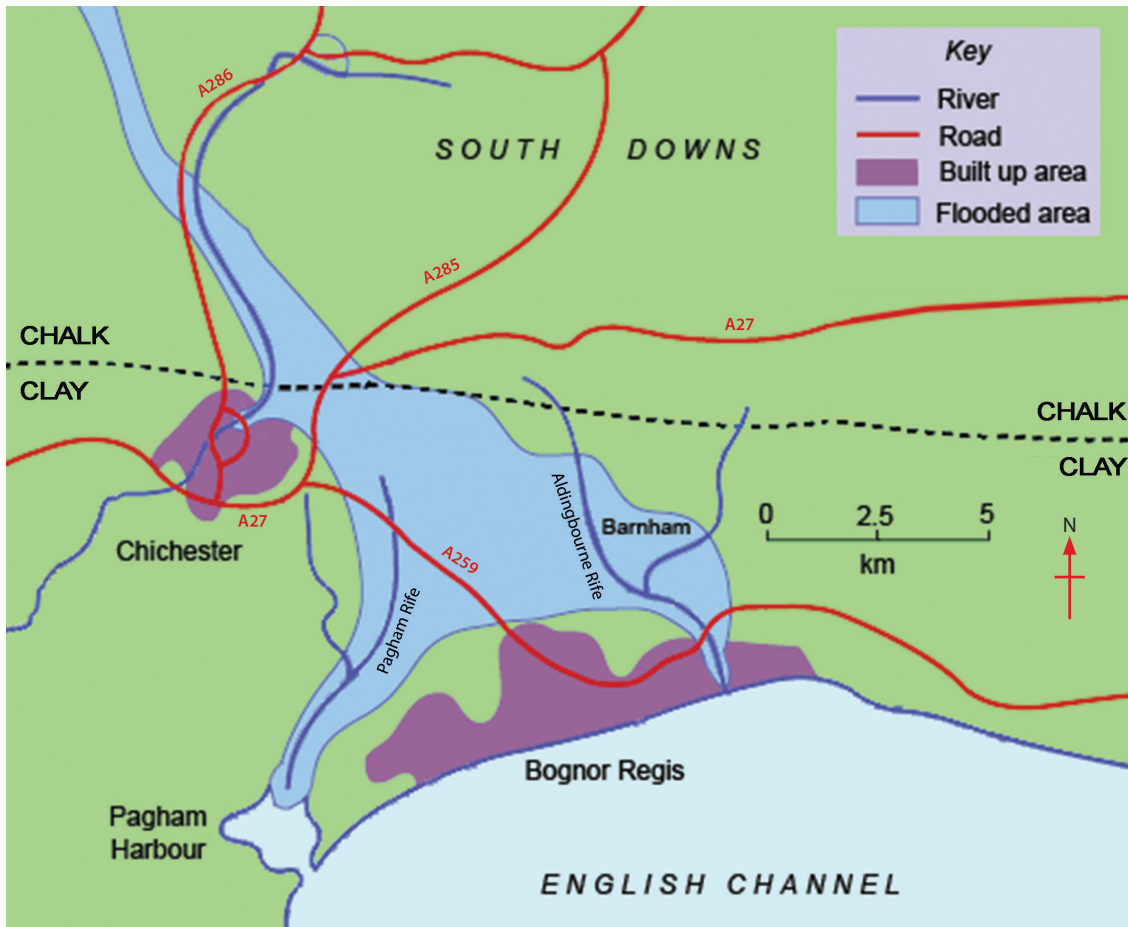


Figure 2a

A map showing areas affected by the flooding near Chichester

(i) Describe how geology affects the pattern of flooding in Figure 2a.

(2)

.....

.....

.....

.....



(ii) Describe how flooding might affect people living in the area shown in Figure 2a.

Use evidence from the map in your answer.

(3)

.....

.....

.....

.....

.....

.....

.....

.....

.....

.....

(b) Study Figure 2b (photograph) in the Resource Booklet.

River courses are divided into three stages. Which stage of the Virgin River is shown in Figure 2b?

Explain your choice.

(4)

Chosen stage

.....

.....

.....

.....

.....

.....

.....

.....

.....

.....

.....

.....

.....

.....

.....

.....

.....

.....

.....

.....

.....

.....



* (c) Using examples, explain how the effects of flooding can be reduced through planning and education.

(6)

.....

.....

.....

.....

.....

.....

.....

.....

.....

.....

.....

.....

.....

.....

.....

.....

.....

.....

.....

.....

.....

.....

(Total for Question 2 = 15 marks)



Topic 3: Tectonic Landscapes

3 (a) Study Figure 3a.

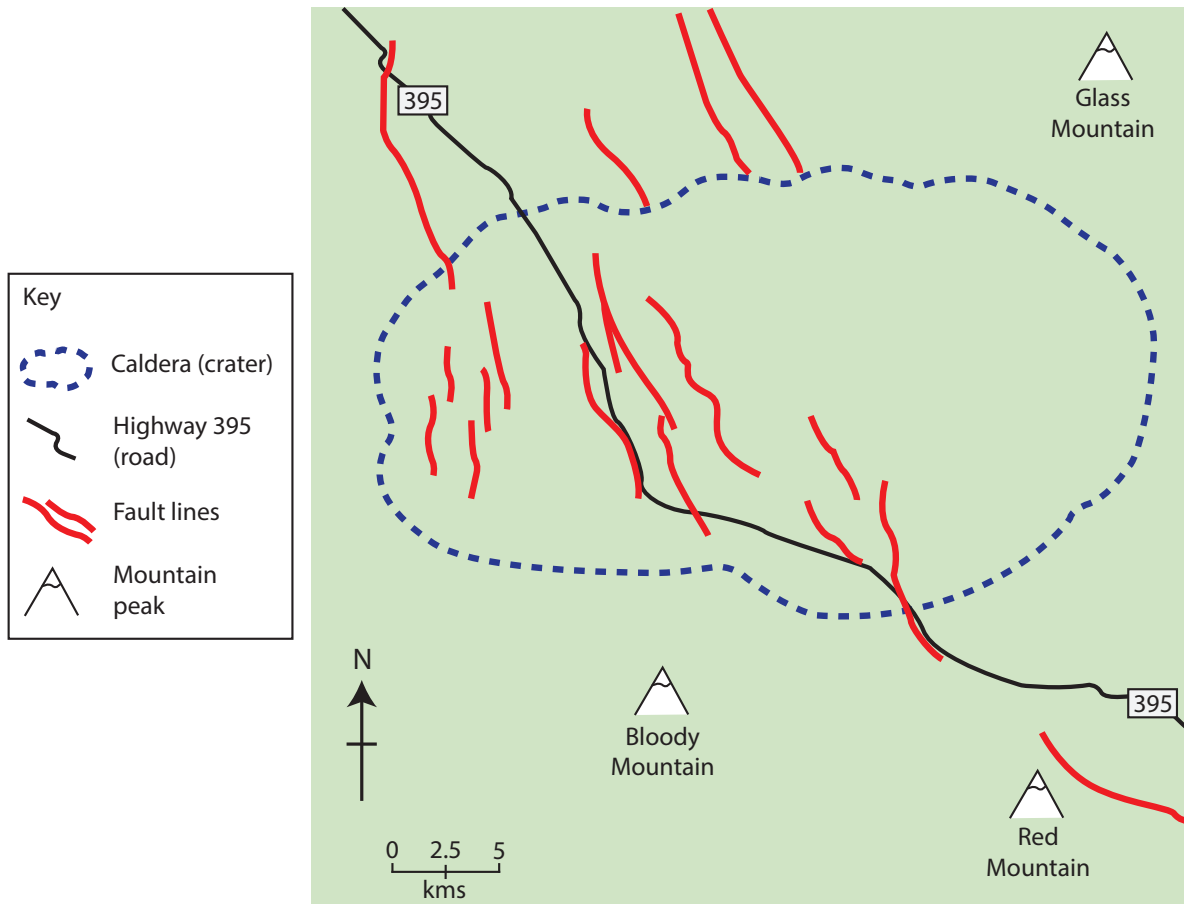


Figure 3a

A sketch map showing the distribution of fault lines in Long Valley, California

Describe the distribution of fault lines shown in Figure 3a.

(3)

.....

.....

.....

.....

.....

.....



(b) Outline **one** way scientists can measure the magnitude or impact of earthquakes.

(2)

.....

.....

.....

.....

(c) For an earthquake **or** volcanic eruption you have studied, explain **two** effects on people.

(4)

Chosen earthquake/volcanic eruption

.....

.....

.....

.....

.....

.....

.....

.....

.....

.....



*d) Study Figure 3b (photograph) in the Resource Booklet.

Explain how volcanoes are formed on convergent plate boundaries.

(6)

.....

.....

.....

.....

.....

.....

.....

.....

.....

.....

.....

.....

.....

.....

.....

.....

.....

.....

.....

.....

.....

.....

.....

(Total for Question 3 = 15 marks)

TOTAL FOR SECTION A = 45 MARKS



SECTION B – ENVIRONMENTAL ISSUES

Answer EITHER Question 4 or Question 5.

Topic 4: A Wasteful World

Spelling, punctuation and grammar will be assessed in 4*(e).

If you answer Question 4 put a cross in the box .

4 (a) Describe the difference between the terms **recycling and **reuse**.**

(2)

.....

.....

.....

.....



(b) Study Figure 4a.



Figure 4a

A cartoon about waste

Outline the message shown in the cartoon in Figure 4a.

(3)

.....

.....

.....

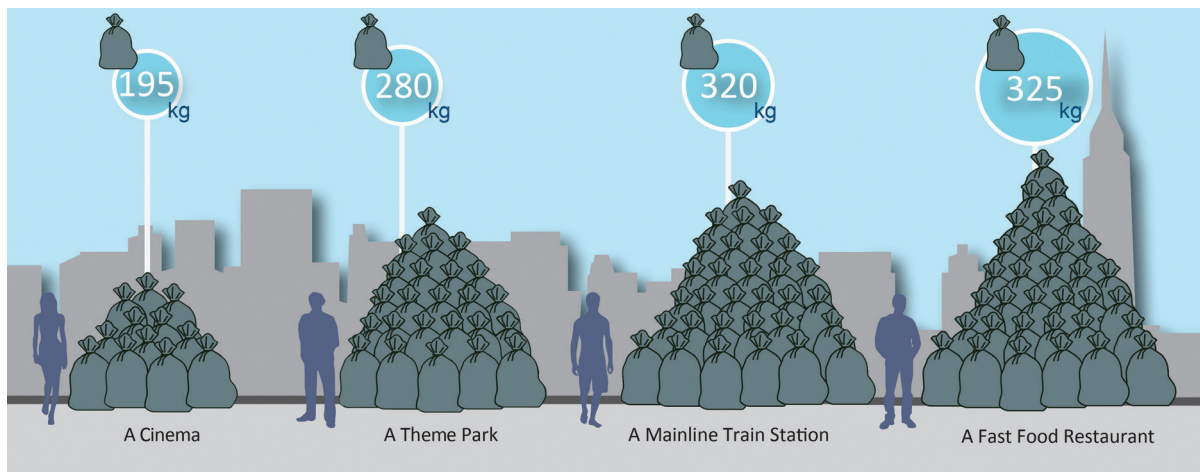
.....

.....

.....



(c) Study Figure 4b.



(Source: <http://catalystreview.net/wp-content/uploads/2010/04/Garbage-Contribution-580.png>)

Figure 4b

Average waste contributions from businesses in a 6 hour period

(i) Using Figure 4b, describe the differences in average waste production.

(2)

.....

.....

.....

.....



(ii) Give reasons why many High Income Countries (HICs) export some of their waste.

(3)

.....

.....

.....

.....

.....

.....



(d) Explain how energy is wasted by industry and households.

(4)

.....

.....

.....

.....

.....

.....

.....

.....

.....

.....



*(e) Examine how the development of a renewable energy source may have impacts on both the local and global environment.

(6)

Chosen renewable energy source

.....
.....
.....
.....
.....
.....
.....
.....
.....
.....
.....
.....
.....
.....
.....
.....
.....
.....
.....
.....
.....
.....
.....

(Total for spelling, punctuation and grammar = 4 marks)

(Total for Question 4 = 24 marks)



Topic 5: A Watery World

Spelling, punctuation and grammar will be assessed in 5*(e).

If you answer Question 5 put a cross in the box .

5 (a) Describe the difference between water-borne disease and water pollution.

(2)

.....

.....

.....

.....



(b) Study Figure 5a (photograph).



(Source: © Michael Aw / Getty Images)

Figure 5a

Water Supply at Boulder City, Arizona

Describe the water supply method shown in Figure 5a.

(3)

.....

.....

.....

.....

.....

.....



(c) Study Figure 5b.

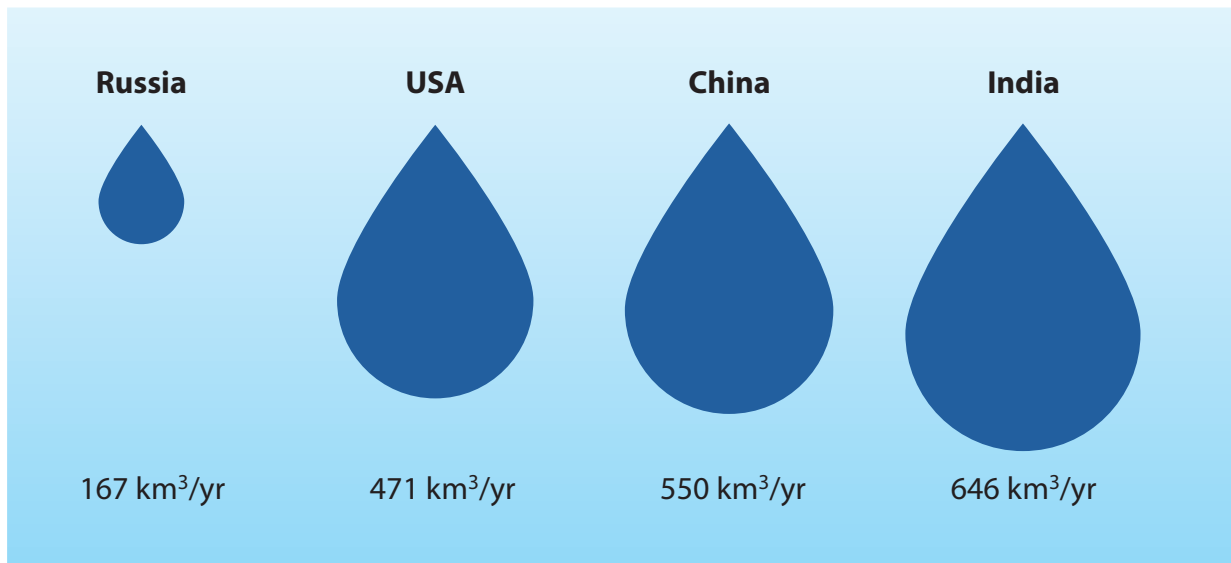


Figure 5b

Total annual fresh water use for selected countries

(i) Using Figure 5b, describe the differences in fresh water use.

(2)

.....

.....

.....

.....

(ii) Give reasons why seasonal variability of rainfall creates water supply problems in High Income Countries (HICs).

(3)

.....

.....

.....

.....

.....

.....



(d) Explain how water is managed by industry and households in HICs.

(4)

.....

.....

.....

.....

.....

.....

.....

.....



***(e)** Examine how appropriate technology is used for water supply in small communities in LICs (Low Income Countries).

Use examples in your answer.

(6)

.....

.....

.....

.....

.....

.....

.....

.....

.....

.....

.....

.....

.....

.....

.....

.....

(Total for spelling, punctuation and grammar = 4 marks)
(Total for Question 5 = 24 marks)

TOTAL FOR SECTION B = 24 MARKS
TOTAL FOR PAPER = 69 MARKS



BLANK PAGE



BLANK PAGE

Pearson Education Ltd. gratefully acknowledges all following sources used in the preparation of this paper:

Figure 4a: © Piero Tonin (2014)

Every effort has been made to contact copyright holders to obtain their permission for the use of copyright material. Pearson Education Ltd. will, if notified, be happy to rectify any errors or omissions and include any such rectifications in future editions.



Pearson Edexcel GCSE

Geography A

Unit 2: The Natural Environment

Wednesday 3 June 2015 – Afternoon

Resource Booklet

Paper Reference

5GA2F/01

5GA2H/01

Do not return the Resource Booklet with the question paper.

Instructions

This Resource Booklet contains resources needed for use with the Unit 2: The Natural Environment examination. This Resource Booklet is for use with both Foundation and Higher tier papers.

Turn over ►

P44705A

©2015 Pearson Education Ltd.

4/4/11/1/1



PEARSON

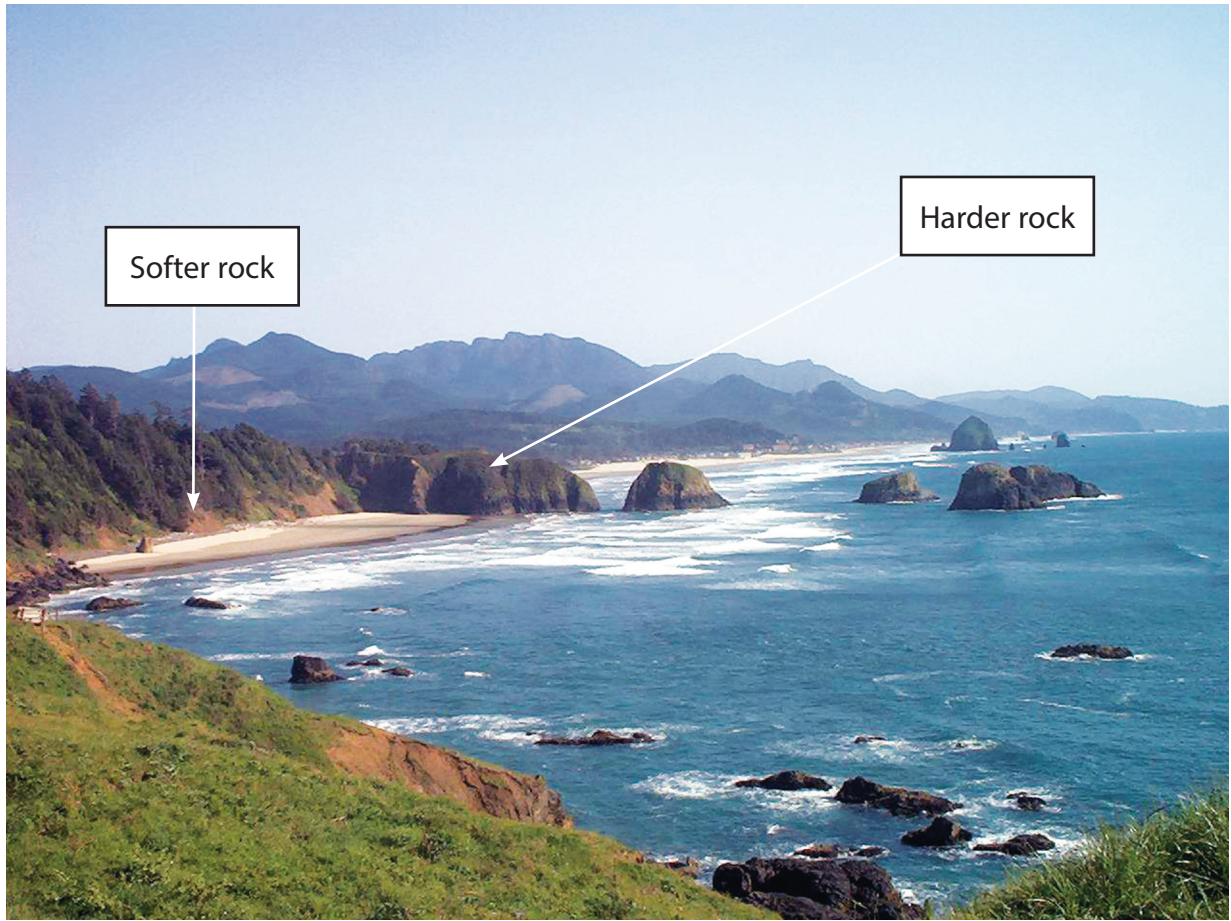


Figure 1b
The Oregon coastline



Figure 2b
The Virgin River in Zion National Park



Figure 3b
**Mount St. Helens is a volcano that was formed
on a convergent plate boundary**

BLANK PAGE