

Write your name here

Surname

Other names

**Pearson**  
**Edexcel GCSE**

Centre Number

--	--	--	--	--

Candidate Number

--	--	--	--	--

# Geography A

## Unit 2: The Natural Environment

**Foundation Tier**

Wednesday 8 June 2016 – Afternoon  
**Time: 1 hour 15 minutes**

Paper Reference

**5GA2F/01**

**You do not need any other materials.**

Total Marks

### Instructions

- Use **black** ink or ball-point pen.
- **Fill in the boxes** at the top of this page with your name, centre number and candidate number.
- In Section **A** answer **all** questions.
- In Section **B** answer **either** question 4 **or** 5.
- Answer the questions in the spaces provided  
– *there may be more space than you need.*

### Information

- The total mark for this paper is 69.
- The marks for **each** question are shown in brackets  
– *use this as a guide as to how much time to spend on each question.*
- Questions labelled with an **asterisk** (\*) are ones where the quality of your written communication will be assessed  
– *you should take particular care on these questions with your spelling, punctuation and grammar, as well as the clarity of expression.*
- The marks available for spelling, punctuation and grammar are clearly indicated.

### Advice

- Read each question carefully before you start to answer it.
- Check your answers if you have time at the end.

Turn over ►

P46466A

©2016 Pearson Education Ltd.

1/1/1/1/1/1



**PEARSON**

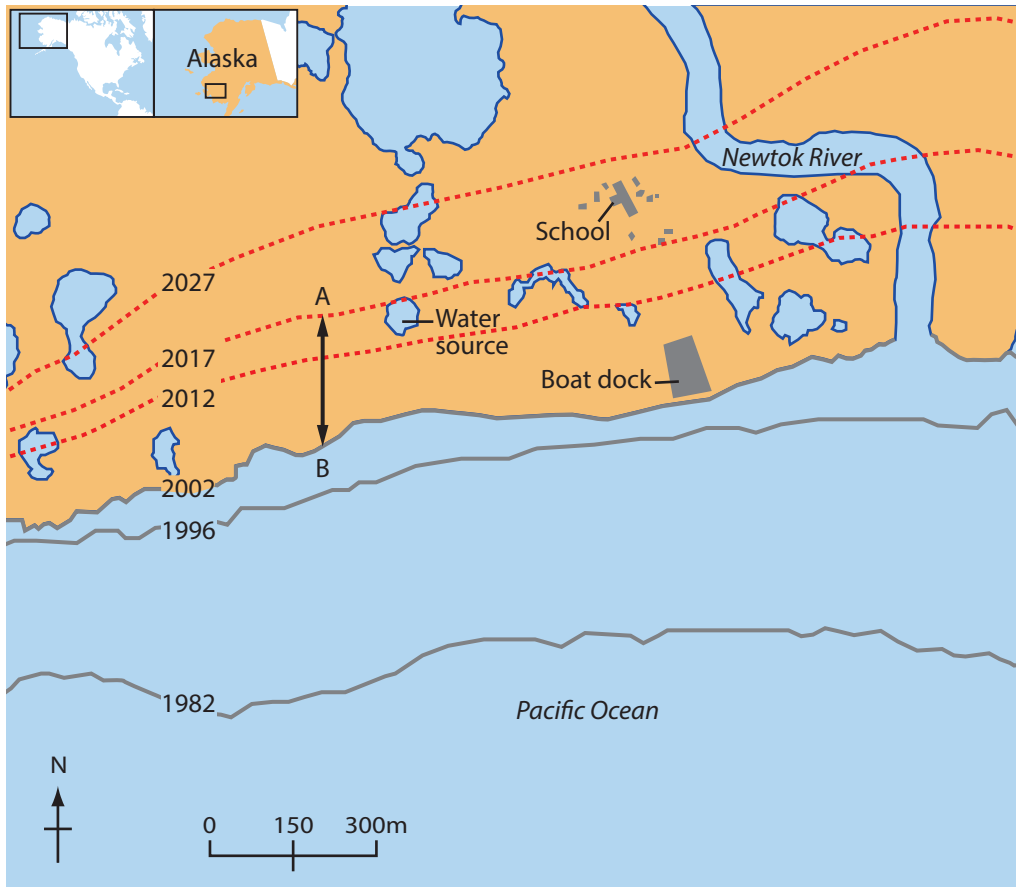
## SECTION A – THE PHYSICAL WORLD

Answer ALL questions in this Section.

Some questions must be answered with a cross in a box ☒. If you change your mind about an answer, put a line through the box ☒ and then mark your new answer with a cross ☒.

### Topic 1: Coastal Landscapes

1 Study Figure 1a.



- Coastline position
- ⋯ Projected coastline position
- ▭ Fresh water
- Buildings

Figure 1a

The past and projected coastline at Newtok, Alaska, 2002

DO NOT WRITE IN THIS AREA

DO NOT WRITE IN THIS AREA

DO NOT WRITE IN THIS AREA



- (a) (i) Complete the following sentences that describe the changes in the position of the coastline and the impacts of this at Newtok, Alaska.

Use some of the words, dates and numbers in the box below.

(4)

2012	more	45	school	2002
less	63	water source	1996	ocean

Figure 1a shows changes in the position of the coastline over

a ..... year period.

By ..... the boat dock had been destroyed by the sea.

By 2017 Newtok will lose its .....

It is likely that these coastal changes may cause ..... people to move away from this area.

- (ii) What is the distance between points A and B?

(1)

- A Less than 150 metres.
- B 150–200 metres.
- C 200–250 metres.
- D 250–300 metres.

- (iii) Which **one** of the following is a possible reason for the changes to this coastline?

(1)

- A A fall in sea level.
- B Additional sea defences.
- C A rise in sea level.
- D Cliff regrading.



(b) Which **one** of the following best describes the impact of a **long** fetch on a coastline?

(1)

- A** There will be less erosion.
- B** There will be more erosion.
- C** There will be no erosion.
- D** There will be more weathering.

(c) Outline the following coastal processes:

(4)

Weathering

.....

.....

.....

.....

Mass movement

.....

.....

.....

.....



(d) Using located examples, describe how the effects of coastal flooding are reduced through forecasting.

(4)

.....

.....

.....

.....

.....

.....

.....

.....

.....

**(Total for Question 1 = 15 marks)**

DO NOT WRITE IN THIS AREA

DO NOT WRITE IN THIS AREA

DO NOT WRITE IN THIS AREA



## Topic 2: River Landscapes

2 (a) (i) Which **one** of the following terms describes the place where two rivers join? (1)

- A mouth
- B confluence
- C source
- D tributary

(ii) Which **one** of the following is a definition of the term **watershed**? (1)

- A The main channel in a drainage basin.
- B A shape of a drainage basin.
- C The boundary of the drainage basin.
- D The size of the drainage basin.

(b) Study Figure 2a.



Figure 2a

A photograph of river landforms in Iceland



(i) Which **one** of the following landforms is shown in Figure 2a?

(1)

- A** gorge
- B** meander
- C** floodplain
- D** interlocking spurs

(ii) Complete the following sentences that describe the formation of the landforms shown in Figure 2a.

Use some of the words in the box below.

(4)

<b>water</b>	<b>horizontal</b>	<b>rock</b>	<b>gradual</b>	<b>precipitation</b>
<b>steep</b>	<b>hydraulic action</b>	<b>solution</b>	<b>vertical</b>	<b>attrition</b>

An important process in the formation of waterfalls

is ..... erosion.

The main type of erosion in the plunge pool is .....

This erosion is caused by the force of the .....

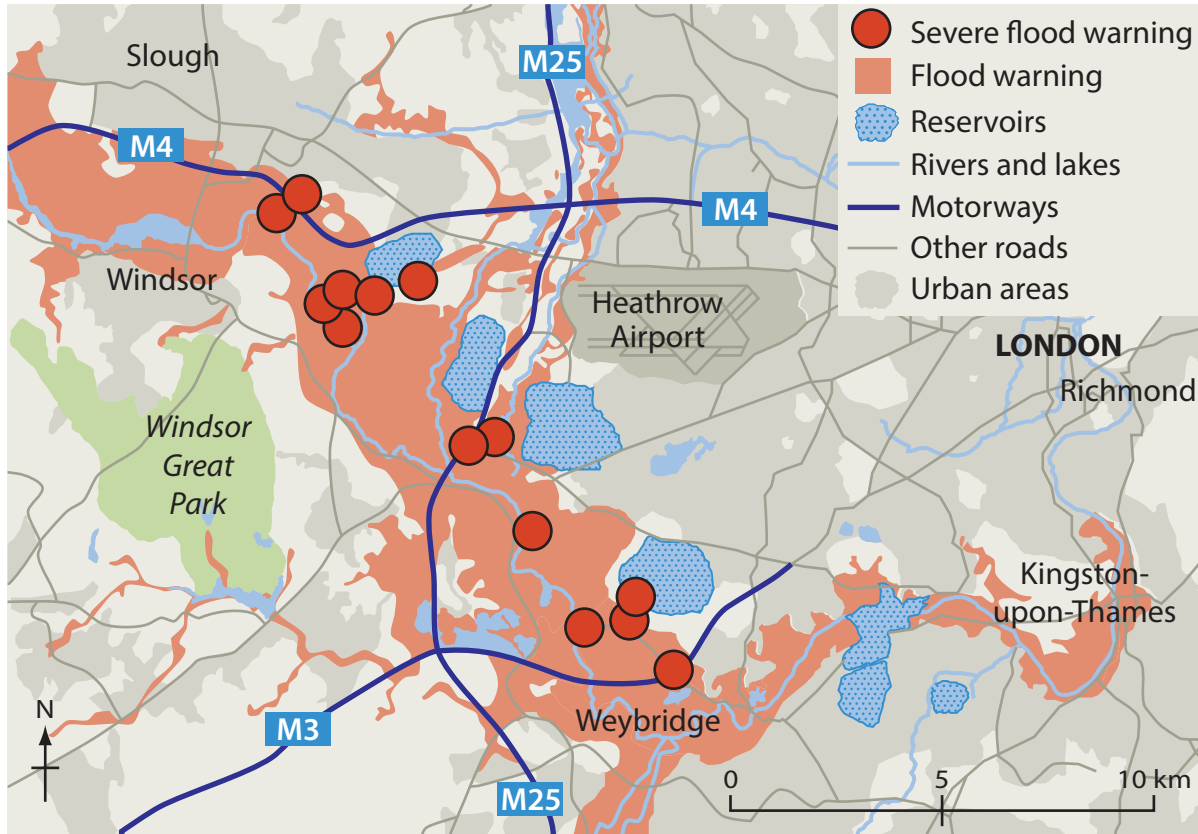
hitting the rock.

As the waterfall cuts back it leaves

a ..... sided valley.



(c) Study Figure 2b.



**Figure 2b**

**Flood warnings around south west London, February 2014**

Using Figure 2b, suggest **two** impacts of the possible flooding on people.

(4)

- 1 .....
- .....
- .....
- .....
- .....
- .....
- 2 .....
- .....
- .....
- .....
- .....

DO NOT WRITE IN THIS AREA

DO NOT WRITE IN THIS AREA

DO NOT WRITE IN THIS AREA





(d) Explain the advantages of using hard engineering to manage rivers in the UK.

(4)

DO NOT WRITE IN THIS AREA

DO NOT WRITE IN THIS AREA

DO NOT WRITE IN THIS AREA

DO NOT WRITE IN THIS AREA

DO NOT WRITE IN THIS AREA

DO NOT WRITE IN THIS AREA

DO NOT WRITE IN THIS AREA

DO NOT WRITE IN THIS AREA

DO NOT WRITE IN THIS AREA

DO NOT WRITE IN THIS AREA

**(Total for Question 2 = 15 marks)**



DO NOT WRITE IN THIS AREA

DO NOT WRITE IN THIS AREA

DO NOT WRITE IN THIS AREA

**BLANK PAGE**  
**QUESTION 3 BEGINS ON THE NEXT PAGE.**



### Topic 3: Tectonic Landscapes

3 (a) (i) Which **one** of the following is the name of the descriptive scale used to measure earthquake impact or damage? (1)

- A Mercalli
- B Seismic
- C Saffir-Simpson
- D Richter

(ii) Which **one** of the following is the **best** definition of an earthquake? (1)

- A Lava erupting onto the surface.
- B A build up of pressure leading to the crust breaking.
- C Shaking and movements of the surface.
- D Pressure build up in the crust.

(iii) Where are high magnitude earthquakes most likely to occur? (1)

- A On divergent plate boundaries.
- B On hotspots.
- C On the sea floor.
- D On convergent plate boundaries.

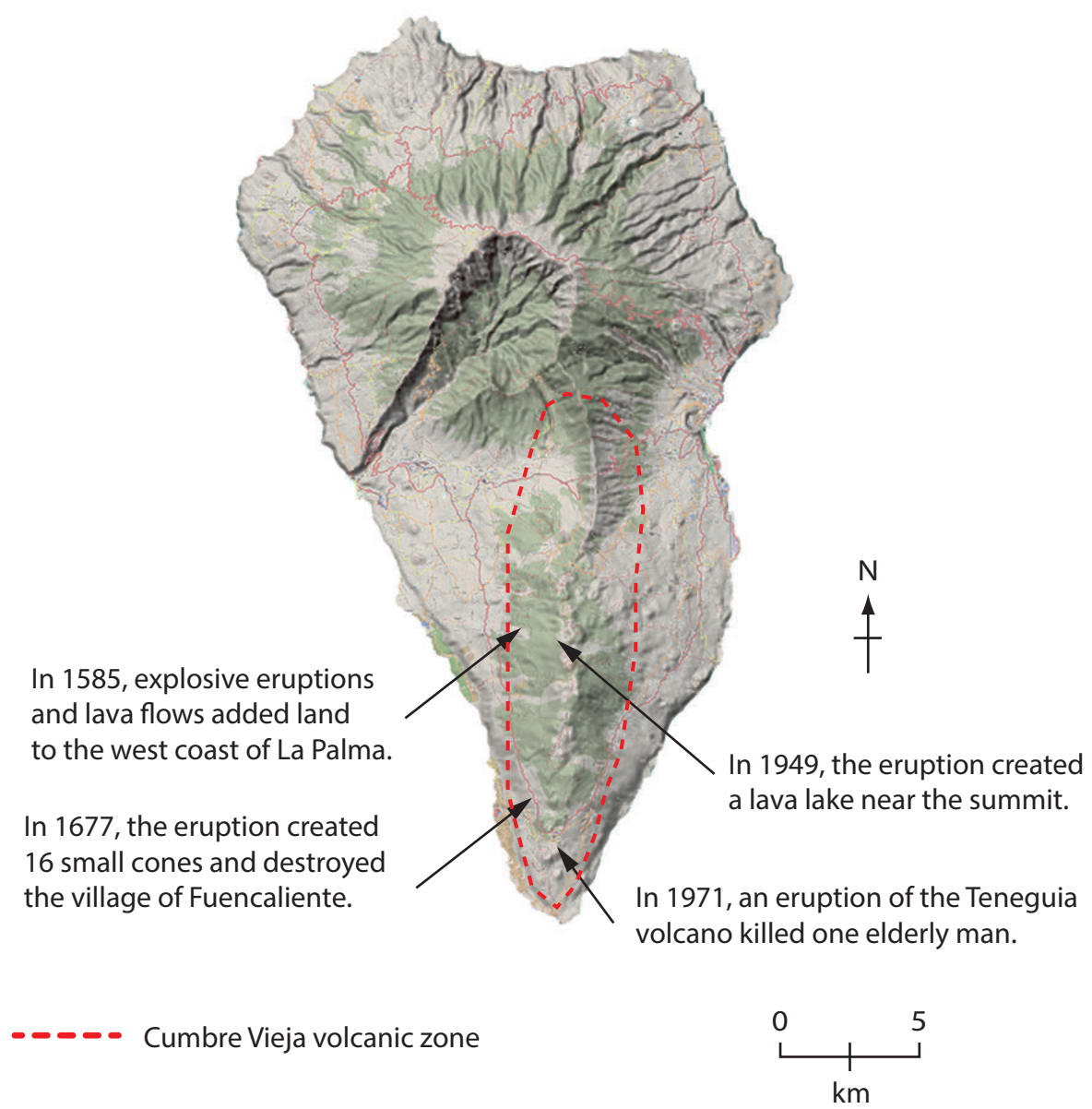
DO NOT WRITE IN THIS AREA

DO NOT WRITE IN THIS AREA

DO NOT WRITE IN THIS AREA



(b) Study Figure 3a.



**Figure 3a**

**Map showing some of the historic eruptions on the island of La Palma, Canary Islands**



Complete the following sentences to describe the volcanic activity on La Palma.

Use some of the words in the box below.

(4)

1677	ocean	Cumbre Vieja	Duraznero	1971
lava	Teneguia	1585	Fuencaliente	fresh water

The date of the earliest eruption was .....

Active volcanoes are found in the ..... zone.

The most recent eruption was the ..... volcano and caused the death of one man.

The 1949 eruption created a ..... lake.

(c) Using located examples, describe the economic reasons why people continue to live in areas affected by earthquakes.

(4)

.....

.....

.....

.....

.....

.....

.....

.....

DO NOT WRITE IN THIS AREA

DO NOT WRITE IN THIS AREA

DO NOT WRITE IN THIS AREA



(d) Use an annotated diagram(s) to explain the formation of a hotspot (volcanic island).

(4)

DO NOT WRITE IN THIS AREA

DO NOT WRITE IN THIS AREA

DO NOT WRITE IN THIS AREA

---

**(Total for Question 3 = 15 marks)**

---

**TOTAL FOR SECTION A = 45 MARKS**



DO NOT WRITE IN THIS AREA

DO NOT WRITE IN THIS AREA

DO NOT WRITE IN THIS AREA

**BLANK PAGE**  
**SECTION B BEGINS ON THE NEXT PAGE**



**SECTION B – ENVIRONMENTAL ISSUES**

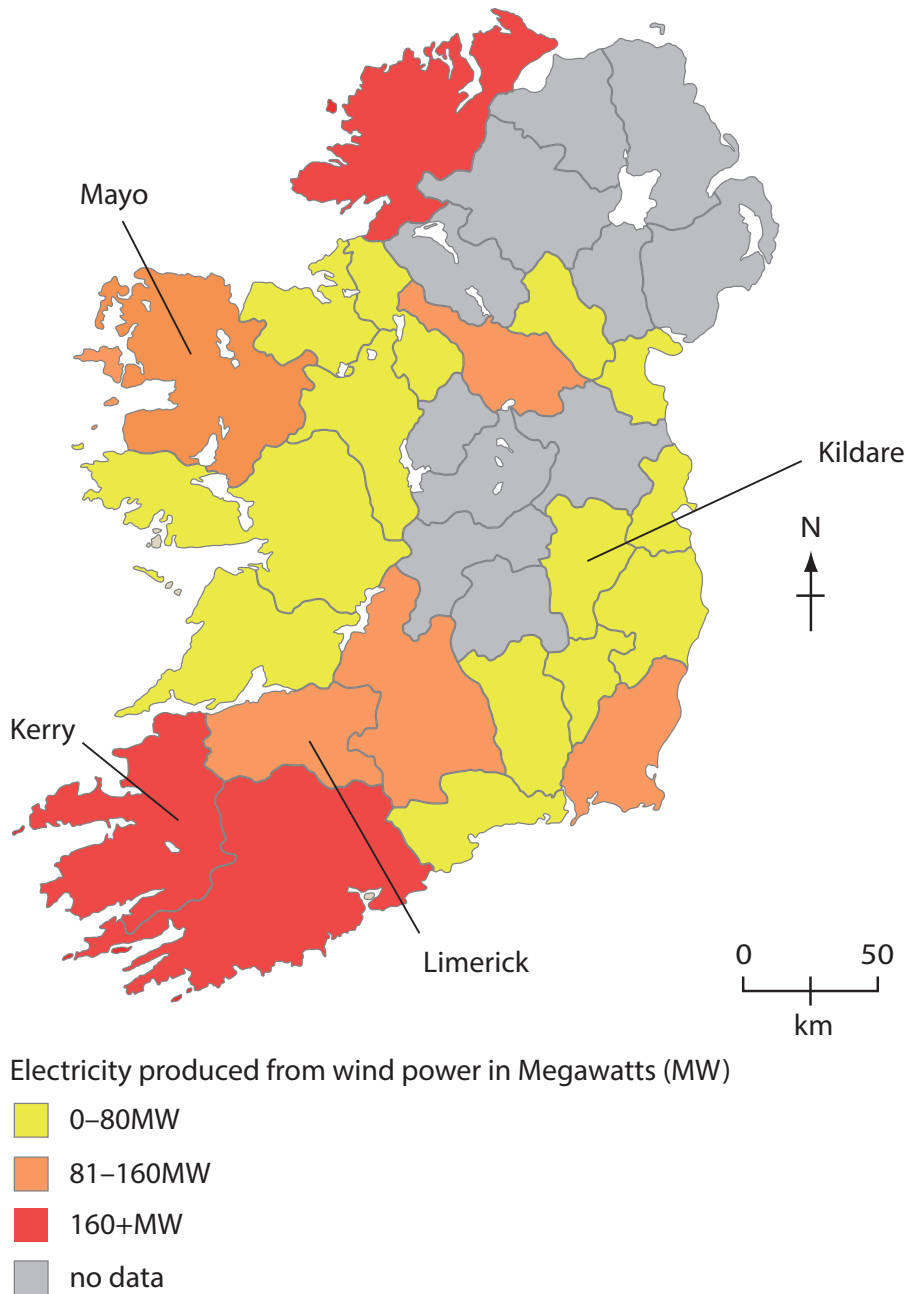
**Answer EITHER Question 4 OR Question 5.**

**Topic 4: A Wasteful World**

**Spelling, punctuation and grammar will be assessed in 4\*(d).**

**If you answer Question 4 put a cross in the box  .**

**4** Study Figure 4a.



(Source: © Copyright Guardian News & Media Ltd 2012)

**Figure 4a**

**Electricity (MW) produced from wind energy in selected Irish counties, 2012**

DO NOT WRITE IN THIS AREA

DO NOT WRITE IN THIS AREA

DO NOT WRITE IN THIS AREA





(a) (i) Using Figure 4a, complete the table below.

(2)

County	Energy produced from wind (megawatts – MW)
Kildare	0–80 MW
Mayo	81–160 MW
Kerry	
Limerick	

(ii) Which **one** of the following is used to generate wind energy?

(1)

- A solar panels
- B biomass
- C rotating turbines
- D anemometer

(iii) Which **one** of the following best describes the pattern of electricity produced from wind power shown on Figure 4a?

(1)

- A The highest values are in the east.
- B Most of the lowest values are in the west.
- C The lowest values are in the north east.
- D Most of the highest values are in the south west.

(iv) Suggest **one** reason why there is a variation in electricity generated from wind power in Ireland.

(2)

.....

.....

.....

.....



(b) Study Figure 4b.

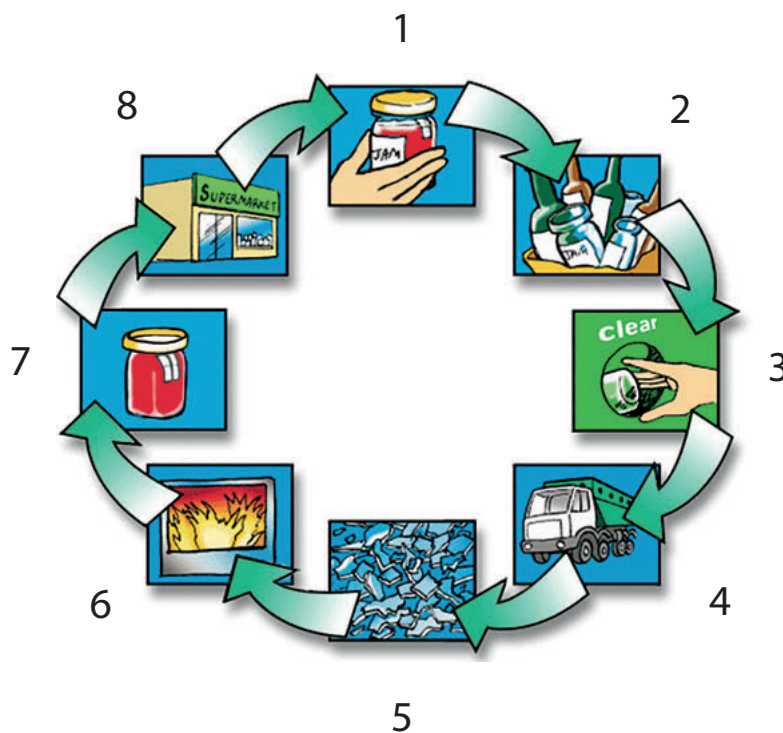


Figure 4b

**The process of glass recycling on a local scale**

(i) Identify Stages 3 and 8 using the list below.

- A Sort glass at home.
- B Filled jars are taken to the shops.
- C New jars are filled.
- D Glass collected and transported to a recycling centre.
- E Put glass in a recycling bin.
- F Glass is crushed for melting.
- G Glass is melted into new shapes
- H Products from glass jars used at home

(2)

Stage 3 .....

Stage 8 .....



(ii) Outline **one** advantage of recycling.

(2)

.....

.....

.....

.....

(c) Describe how a named High Income Country (HIC) disposes of its solid waste.

(4)

Named HIC .....

.....

.....

.....

.....

.....

.....

.....

.....

.....

.....

DO NOT WRITE IN THIS AREA

DO NOT WRITE IN THIS AREA

DO NOT WRITE IN THIS AREA



\* (d) Explain why the carbon footprint varies for countries at different levels of development.

(6)

.....

.....

.....

.....

.....

.....

.....

.....

.....

.....

.....

.....

.....

.....

.....

.....

.....

.....

.....

.....

.....

.....

.....

**(Total for spelling, punctuation and grammar = 4 marks)**  
**(Total for Question 4 = 24 marks)**

DO NOT WRITE IN THIS AREA

DO NOT WRITE IN THIS AREA

DO NOT WRITE IN THIS AREA



DO NOT WRITE IN THIS AREA

DO NOT WRITE IN THIS AREA

DO NOT WRITE IN THIS AREA

**BLANK PAGE**  
**QUESTION 5 BEGINS ON THE NEXT PAGE.**



## Topic 5: A Watery World

Spelling, punctuation and grammar will be assessed in 5\*(e).

If you answer Question 5 put a cross in the box  .

5 Study Figure 5a.

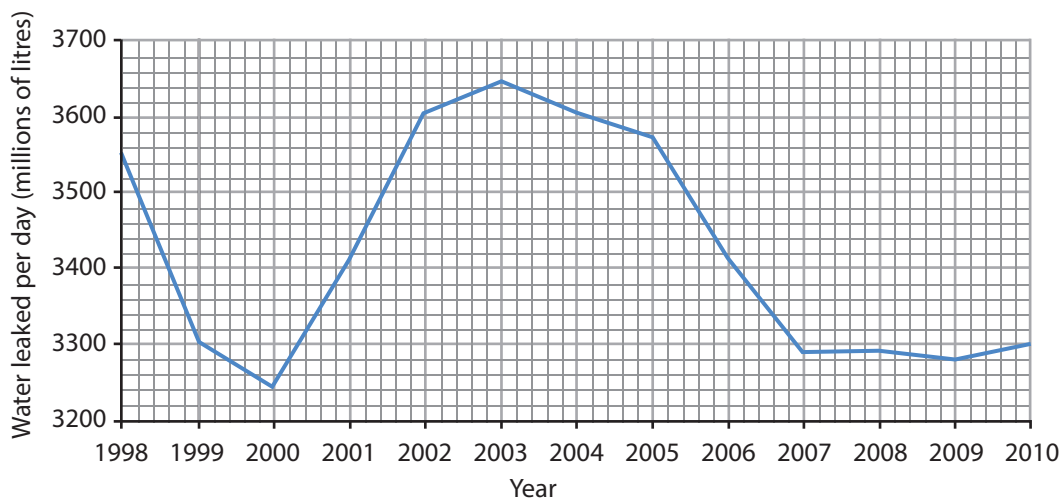


Figure 5a

Water leaked per day (millions of litres) in the UK, 1998–2010

(a) (i) Complete the table below.

(2)

Year	Water leaked per day (millions of litres)
1998	3550
2003	
2008	
2010	3400



(ii) Which **one** of the following best describes changes in the amount of water leaked shown in Figure 5a?

(1)

- A** The amount of water leaked increases between 1998 and 2010.
- B** The amount of water leaked peaks at 3750.
- C** From 2001 to 2003 the amount of water leaked decreases.
- D** The amount of water leaked decreased between 2003 and 2009.

(iii) Which **one** of the following best describes a reason for water leakages, such as those shown on Figure 5a?

(1)

- A** Broken main water pipes.
- B** People taking too much water from rivers.
- C** Heavy rainfall.
- D** Broken radiators.

(b) Suggest **one** reason why a lack of rainfall can cause water supply problems.

(2)

.....

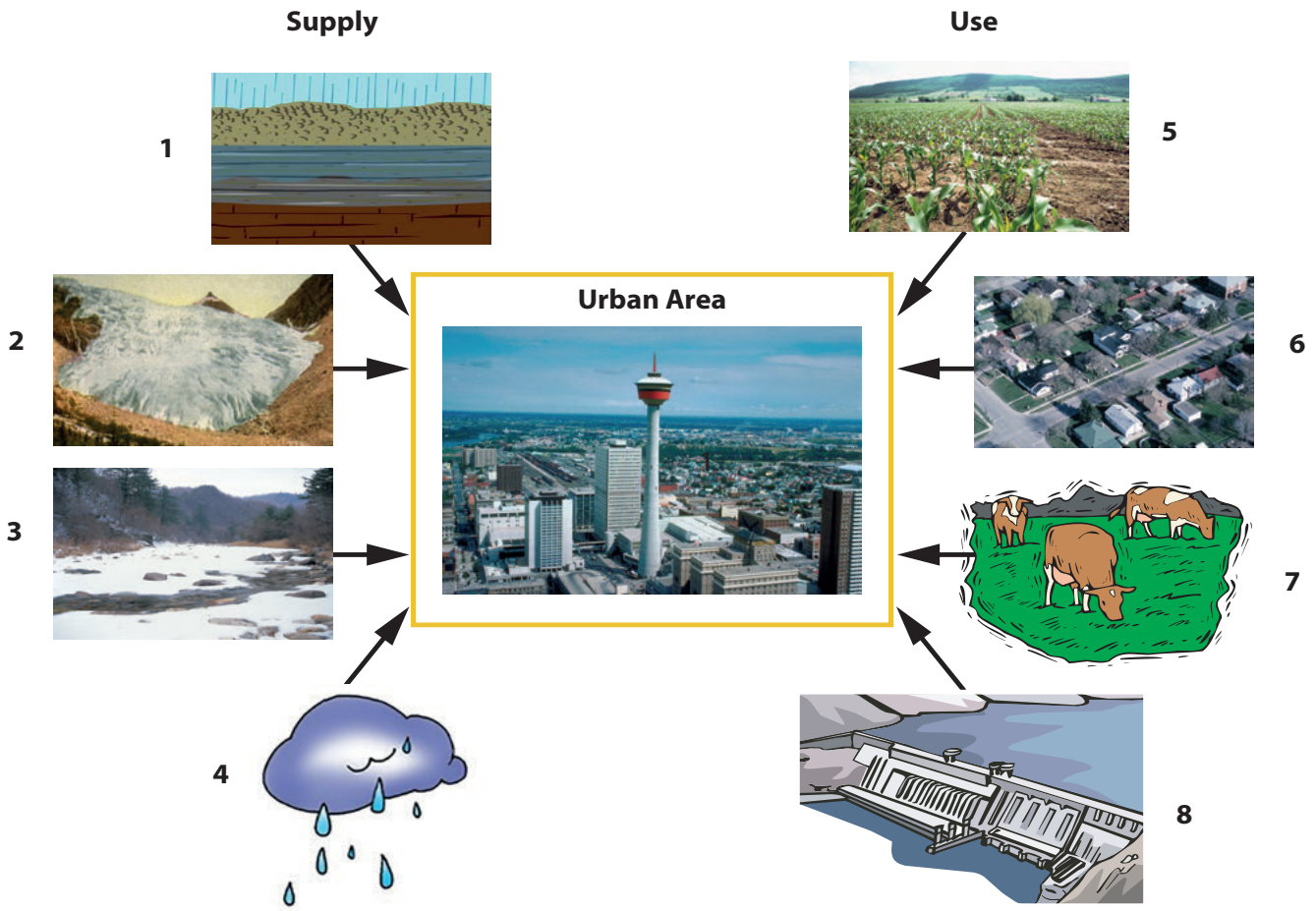
.....

.....

.....



(c) Study Figure 5b.



**Figure 5b**

**Water supply and use in a large city and the surrounding area**

(i) Identify water supply or use 2 and 7 using the list below.

- A** groundwater
- B** snow melt
- C** precipitation
- D** glacial melt
- E** irrigation of crops
- F** households
- G** leisure
- H** cattle farming

(2)

Supply/Use 2 .....

Supply/Use 7 .....

DO NOT WRITE IN THIS AREA

DO NOT WRITE IN THIS AREA

DO NOT WRITE IN THIS AREA





(ii) Outline **one** way water use is managed in an urban area.

(2)

.....

.....

.....

.....

(d) Using examples, explain the different methods used to obtain water on a **local** scale.

(4)

.....

.....

.....

.....

.....

.....

.....

.....

DO NOT WRITE IN THIS AREA

DO NOT WRITE IN THIS AREA

DO NOT WRITE IN THIS AREA



\*(e) Explain why HICs are facing an increasing demand for water.

(6)

.....

.....

.....

.....

.....

.....

.....

.....

.....

.....

.....

.....

.....

.....

.....

.....

.....

.....

.....

.....

.....

.....

.....

**(Total for spelling, punctuation and grammar = 4 marks)**  
**(Total for Question 5 = 24 marks)**

---

**TOTAL FOR SECTION B = 24 MARKS**  
**TOTAL FOR PAPER = 69 MARKS**

DO NOT WRITE IN THIS AREA

DO NOT WRITE IN THIS AREA

DO NOT WRITE IN THIS AREA



DO NOT WRITE IN THIS AREA

DO NOT WRITE IN THIS AREA

DO NOT WRITE IN THIS AREA

**BLANK PAGE**



P 4 6 4 6 6 A 0 2 7 2 8

DO NOT WRITE IN THIS AREA

DO NOT WRITE IN THIS AREA

DO NOT WRITE IN THIS AREA

**BLANK PAGE**

Every effort has been made to contact copyright holders to obtain their permission for the use of copyright material. Pearson Education Ltd. will, if notified, be happy to rectify any errors or omissions and include any such rectifications in future editions.

