

Please check the examination details below before entering your candidate information

Candidate surname

Other names

Centre Number

Candidate Number

Pearson Edexcel International Advanced Level

Monday 2 June 2025

Afternoon (Time: 2 hours)

Paper
reference

WGE03/01

Geography

International Advanced Level

UNIT 3: Contested Planet

You must have:

Resource Booklet (enclosed)

Total Marks

Instructions

- Use **black** ink or ball-point pen.
- **Fill in the boxes** at the top of this page with your name, centre number and candidate number.
- Answer **all** questions in Section A, **ONE** question in Section B and **ONE** question in Section C.
- Answer the questions in the spaces provided
– *there may be more space than you need.*
- Calculators may be used.

Information

- The total mark for this paper is 90.
- The marks for **each** question are shown in brackets
– *use this as a guide as to how much time to spend on each question.*

Advice

- Read each question carefully before you start to answer it.
- Check your answers if you have time at the end.

Turn over ►

P78750A

©2025 Pearson Education Ltd.
Y:1/1/1/1




Pearson

DO NOT WRITE IN THIS AREA

DO NOT WRITE IN THIS AREA

DO NOT WRITE IN THIS AREA

Handwriting practice area with 12 horizontal dotted lines.

(Total for Question 1 = 10 marks)

Large blank area for writing the answer to Question 1.



A2: Biodiversity Under Threat

2 (a) Using Figure 2, suggest reasons why future biodiversity levels are uncertain.

(10)

Area with horizontal dotted lines for writing the answer.

DO NOT WRITE IN THIS AREA

DO NOT WRITE IN THIS AREA

DO NOT WRITE IN THIS AREA



DO NOT WRITE IN THIS AREA

DO NOT WRITE IN THIS AREA

DO NOT WRITE IN THIS AREA

(b) Assess the importance of different players in the management of biodiversity at both local and global scales.

(15)



DO NOT WRITE IN THIS AREA

DO NOT WRITE IN THIS AREA

DO NOT WRITE IN THIS AREA

(Total for Question 2 = 25 marks)



DO NOT WRITE IN THIS AREA

DO NOT WRITE IN THIS AREA

DO NOT WRITE IN THIS AREA

(Total for Question 3 = 15 marks)

TOTAL FOR SECTION A = 50 MARKS



(b) Using named examples, assess how far biofuels are the best 'carbon neutral' alternative to fossil fuels.

(15)

DO NOT WRITE IN THIS AREA

DO NOT WRITE IN THIS AREA

DO NOT WRITE IN THIS AREA



DO NOT WRITE IN THIS AREA

DO NOT WRITE IN THIS AREA

DO NOT WRITE IN THIS AREA

Handwriting practice area with 20 horizontal dotted lines.

(Total for Question 4 = 20 marks)



P 7 8 7 5 0 A 0 1 1 2 0

Do not answer Question 5 if you have answered Question 4.

If you answer Question 5, put a cross in the box .

B2: Water Conflicts

5 (a) Using Figure 4, explain how the hydrological cycle operates in this landscape.

(5)

.....

.....

.....

.....

.....

.....

.....

.....

.....

.....

.....

DO NOT WRITE IN THIS AREA

DO NOT WRITE IN THIS AREA

DO NOT WRITE IN THIS AREA



(b) Using named examples, assess how far desalination is the best solution to water insecurity.

(15)

DO NOT WRITE IN THIS AREA

DO NOT WRITE IN THIS AREA

DO NOT WRITE IN THIS AREA

Area with horizontal dotted lines for writing.



P 7 8 7 5 0 A 0 1 3 2 0

DO NOT WRITE IN THIS AREA

DO NOT WRITE IN THIS AREA

DO NOT WRITE IN THIS AREA

(Total for Question 5 = 20 marks)

TOTAL FOR SECTION B = 20 MARKS



DO NOT WRITE IN THIS AREA

DO NOT WRITE IN THIS AREA

DO NOT WRITE IN THIS AREA

Handwriting practice area with 20 horizontal dotted lines.



DO NOT WRITE IN THIS AREA

DO NOT WRITE IN THIS AREA

DO NOT WRITE IN THIS AREA

Handwriting practice area with 15 horizontal dotted lines.

(Total for Question 6 = 20 marks)

Large blank area for writing the answer to Question 6.



DO NOT WRITE IN THIS AREA

DO NOT WRITE IN THIS AREA

DO NOT WRITE IN THIS AREA

Handwriting practice area with 20 horizontal dotted lines.



P 7 8 7 5 0 A 0 1 9 2 0

DO NOT WRITE IN THIS AREA

DO NOT WRITE IN THIS AREA

DO NOT WRITE IN THIS AREA

(Total for Question 7 = 20 marks)

TOTAL FOR SECTION C = 20 MARKS
TOTAL FOR PAPER = 90 MARKS



Pearson Edexcel International Advanced Level

Monday 2 June 2025

Afternoon (Time: 2 hours)

Paper
reference

WGE03/01

Geography

International Advanced Level

UNIT 3: Contested Planet

Resource Booklet

Do not return this Booklet with the question paper.

Turn over ►

P78750A

©2025 Pearson Education Ltd.
Y:1/1/1/1



P 7 8 7 5 0 A



Pearson

SECTION A

A1: Atmosphere and Weather Systems

The following resource relates to Question 1.

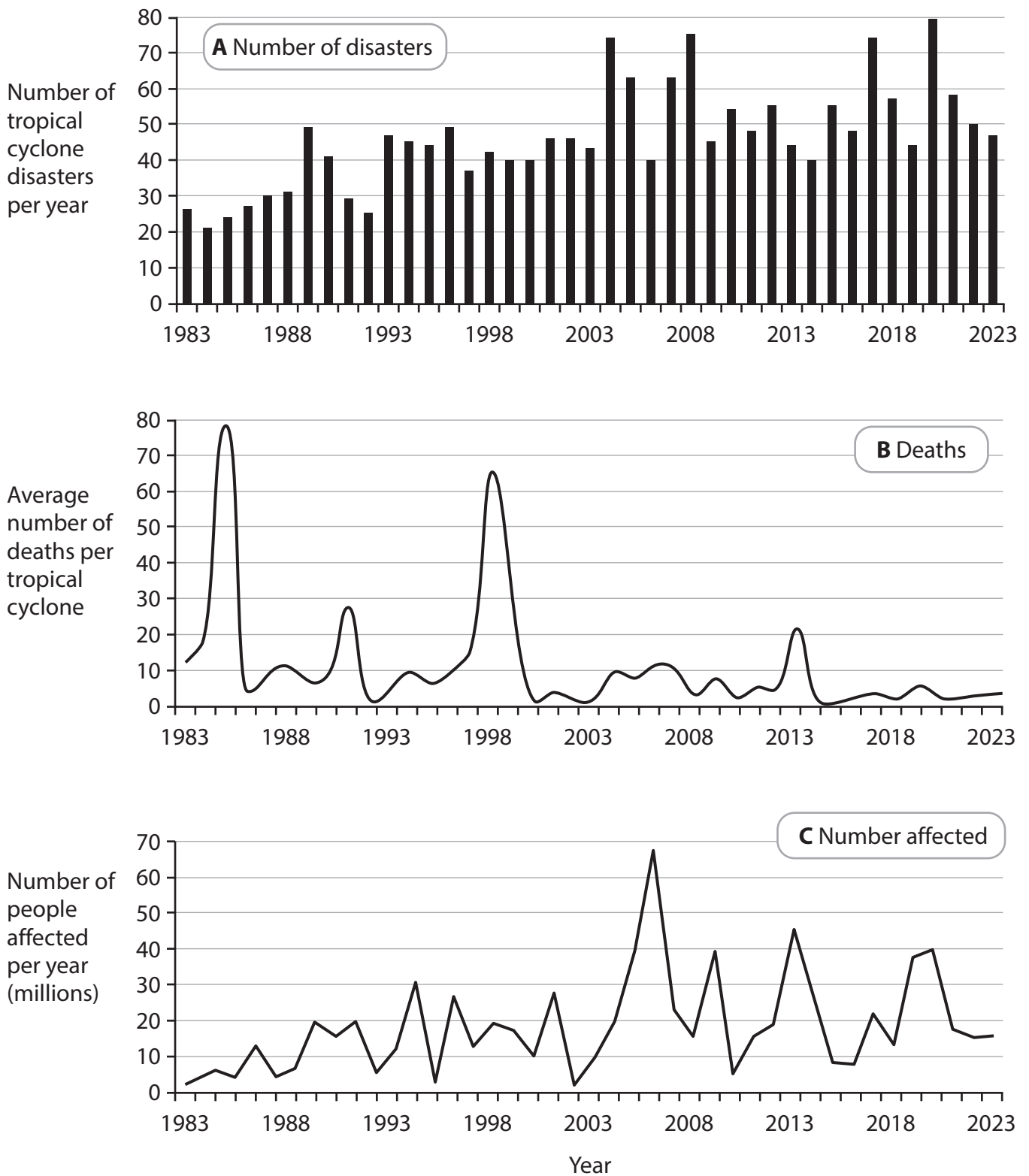


Figure 1

Trends in tropical cyclone disasters, 1983–2023



A2: Biodiversity Under Threat

The following resource relates to Question 2 (a).

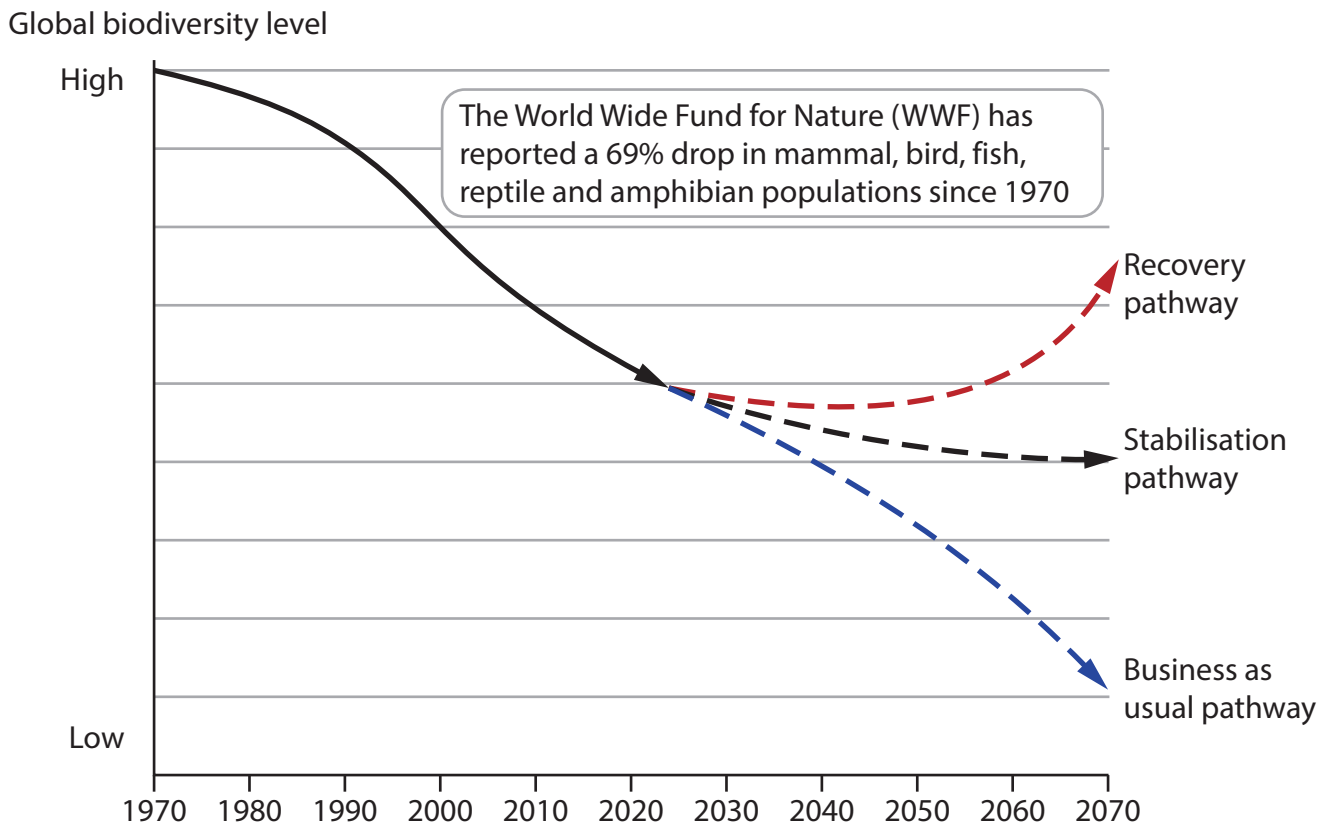


Figure 2

Three possible pathways for global biodiversity to 2070

SECTION B

B1: Energy Security

The following resource relates to Question 4 (a).

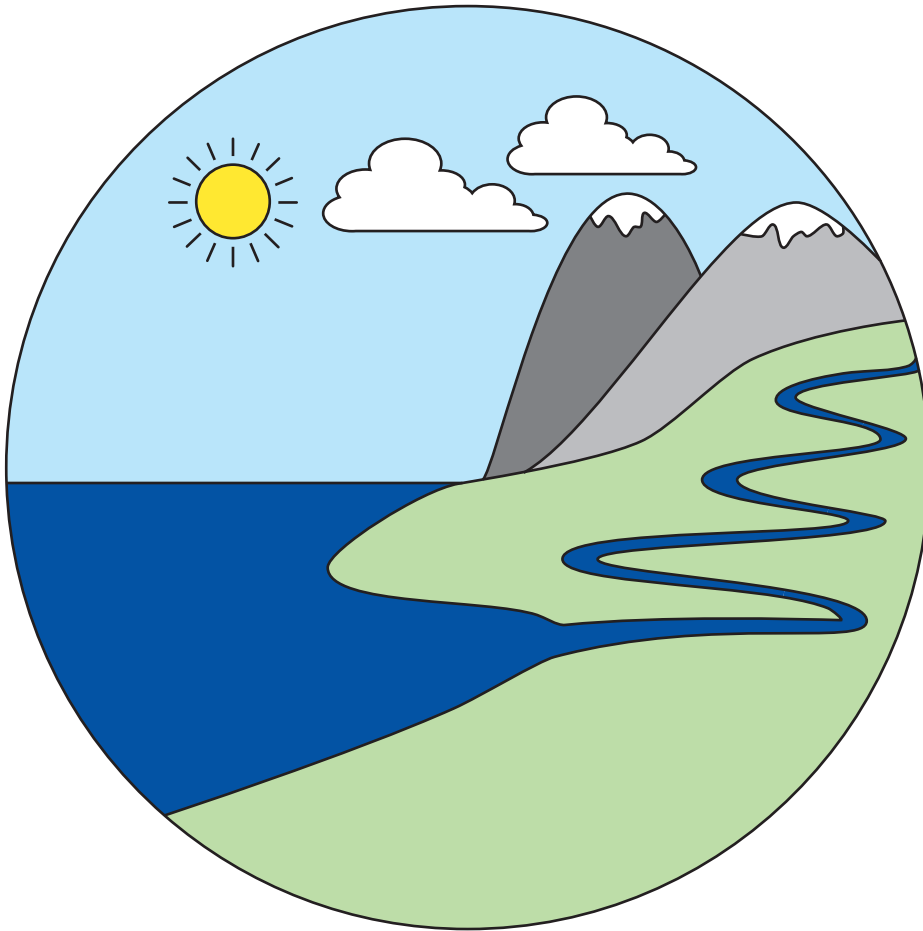


Figure 3

A landscape with renewable energy potential

B2: Water Conflicts

The following resource relates to Question 5 (a).

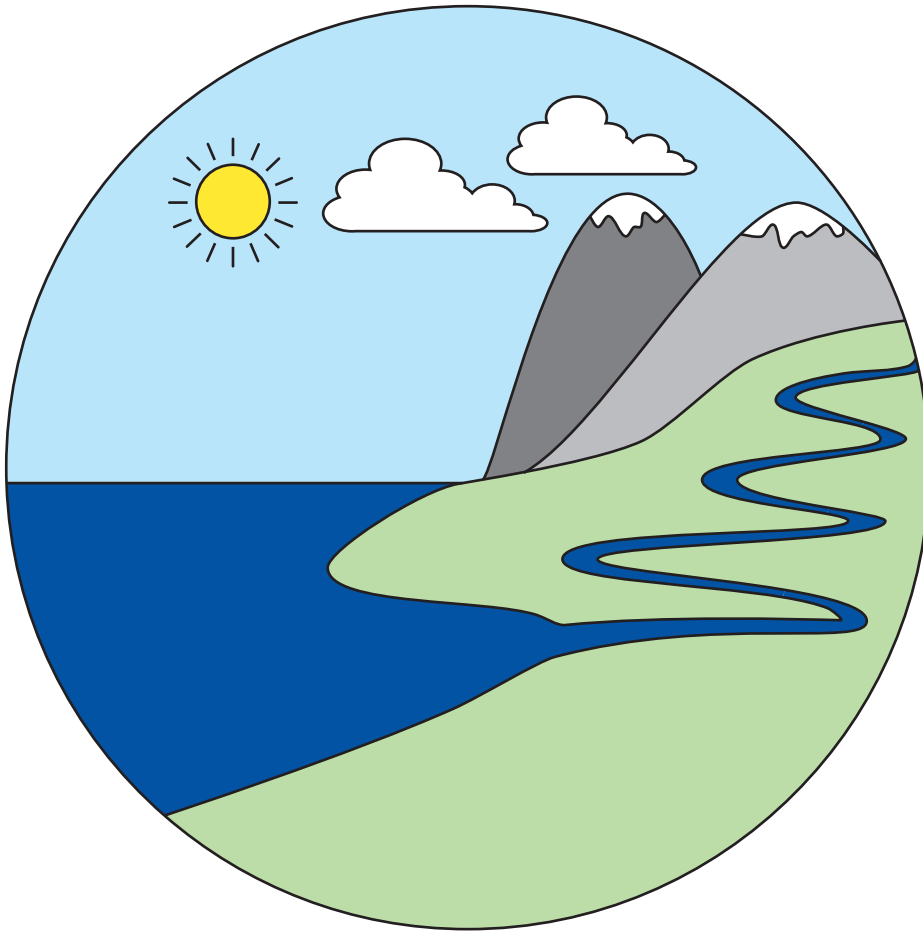


Figure 4

A landscape showing parts of the hydrological cycle

BLANK PAGE



BLANK PAGE



BLANK PAGE

Acknowledgements

Pearson Education Ltd. gratefully acknowledges all the following sources used in the preparation of this paper:

Figures 1, 2, 3, 4: © Cameron Dunn

